

Syntenin 1 Rabbit mAb

Catalog # AP78096

Product Information

Application	WB, IHC-P, IF, FC, ICC, IP
Primary Accession	O00560
Reactivity	Human
Host	Rabbit
Clonality	Monoclonal Antibody
Isotype	IgG
Conjugate	Unconjugated
Immunogen	A synthesized peptide derived from human Syntenin
Purification	Affinity Chromatography
Calculated MW	32444

Additional Information

Gene ID	6386
Other Names	SDCBP
Dilution	WB~~1/500-1/1000 IHC-P~~N/A IF~~1:50~200 FC~~1:10~50 ICC~~N/A IP~~N/A
Format	Liquid in 10mM PBS, pH 7.4, 150mM sodium chloride, 0.05% BSA, 0.02% sodium azide and 50% glycerol.
Storage	Store at 4°C short term. Aliquot and store at -20°C long term. Avoid freeze/thaw cycles.

Protein Information

Name	SDCBP
Synonyms	MDA9, SYCL
Function	Multifunctional adapter protein involved in diverse array of functions including trafficking of transmembrane proteins, neuro and immunomodulation, exosome biogenesis, and tumorigenesis (PubMed: 26291527). Positively regulates TGFB1-mediated SMAD2/3 activation and TGFB1-induced epithelial-to-mesenchymal transition (EMT) and cell migration in various cell types. May increase TGFB1 signaling by enhancing cell-surface expression of TGFBR1 by preventing the interaction between TGFBR1 and CAV1 and subsequent CAV1-dependent internalization and degradation of TGFBR1 (PubMed: 25893292). In concert with SDC1/4 and PDCD6IP, regulates exosome biogenesis (PubMed: 22660413). Regulates migration, growth, proliferation, and cell cycle progression in a variety of cancer types

(PubMed:[26539120](#)). In adherens junctions may function to couple syndecans to cytoskeletal proteins or signaling components. Seems to couple transcription factor SOX4 to the IL-5 receptor (IL5RA) (PubMed:[11498591](#)). May also play a role in vesicular trafficking (PubMed:[11179419](#)). Seems to be required for the targeting of TGFA to the cell surface in the early secretory pathway (PubMed:[10230395](#)).

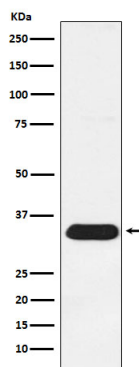
Cellular Location

Cell junction, focal adhesion. Cell junction, adherens junction. Cell membrane; Peripheral membrane protein. Endoplasmic reticulum membrane; Peripheral membrane protein. Nucleus. Melanosome. Cytoplasm, cytosol. Cytoplasm, cytoskeleton. Secreted, extracellular exosome. Membrane raft. Note=Mainly membrane-associated Localized to adherens junctions, focal adhesions and endoplasmic reticulum. Colocalized with actin stress fibers. Also found in the nucleus. Identified by mass spectrometry in melanosome fractions from stage I to stage IV. Associated to the plasma membrane in the presence of FZD7 and phosphatidylinositol 4,5-bisphosphate (PIP2) (PubMed:27386966).

Tissue Location

Expressed in lung cancers, including adenocarcinoma, squamous cell carcinoma and small-cell carcinoma (at protein level) (PubMed:25893292). Widely expressed. Expressed in fetal kidney, liver, lung and brain. In adult highest expression in heart and placenta.

Images



Please note: All products are 'FOR RESEARCH USE ONLY. NOT FOR USE IN DIAGNOSTIC OR THERAPEUTIC PROCEDURES'.