

Methionine Aminopeptidase 2 Rabbit mAb

Catalog # AP78078

Product Information

Application	WB, IHC-P, IF, FC, ICC
Primary Accession	P50579
Reactivity	Rat, Human, Mouse
Host	Rabbit
Clonality	Monoclonal Antibody
Isotype	IgG
Conjugate	Unconjugated
Immunogen	A synthesized peptide derived from human Methionine Aminopeptidase 2
Purification	Affinity Chromatography
Calculated MW	52892

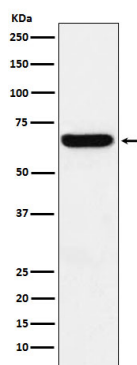
Additional Information

Gene ID	10988
Other Names	METAP2
Dilution	WB~~1/500-1/1000 IHC-P~~N/A IF~~1:50~200 FC~~1:10~50 ICC~~N/A
Format	Liquid in 10mM PBS, pH 7.4, 150mM sodium chloride, 0.05% BSA, 0.02% sodium azide and 50% glycerol.
Storage	Store at 4°C short term. Aliquot and store at -20°C long term. Avoid freeze/thaw cycles.

Protein Information

Name	METAP2 {ECO:0000255 HAMAP-Rule:MF_03175}
Synonyms	MNPEP, P67EIF2
Function	Cotranslationally removes the N-terminal methionine from nascent proteins. The N-terminal methionine is often cleaved when the second residue in the primary sequence is small and uncharged (Met- Ala-, Cys, Gly, Pro, Ser, Thr, or Val). The catalytic activity of human METAP2 toward Met-Val peptides is consistently two orders of magnitude higher than that of METAP1, suggesting that it is responsible for processing proteins containing N-terminal Met-Val and Met-Thr sequences in vivo.
Cellular Location	Cytoplasm {ECO:0000255 HAMAP-Rule:MF_03175, ECO:0000269 PubMed:21537465}. Note=About 30% of expressed METAP2 associates with polysomes

Images



Please note: All products are 'FOR RESEARCH USE ONLY. NOT FOR USE IN DIAGNOSTIC OR THERAPEUTIC PROCEDURES'.