

p150 CAF1 Rabbit mAb

Catalog # AP78066

Product Information

| | |
|--------------------------|--|
| Application | WB, IHC-P, IF, FC, ICC, IP |
| Primary Accession | Q13111 |
| Reactivity | Human |
| Host | Rabbit |
| Clonality | Monoclonal Antibody |
| Isotype | IgG |
| Conjugate | Unconjugated |
| Immunogen | A synthesized peptide derived from human p150 CAF1 |
| Purification | Affinity Chromatography |
| Calculated MW | 106910 |

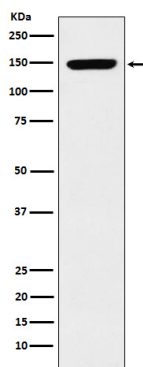
Additional Information

| | |
|--------------------|--|
| Gene ID | 10036 |
| Other Names | CHAF1A |
| Dilution | WB~~1/500-1/1000 IHC-P~~N/A IF~~1:50~200 FC~~1:10~50 ICC~~N/A IP~~N/A |
| Format | Liquid in 10mM PBS, pH 7.4, 150mM sodium chloride, 0.05% BSA, 0.02% sodium azide and 50% glycerol. |
| Storage | Store at 4°C short term. Aliquot and store at -20°C long term. Avoid freeze/thaw cycles. |

Protein Information

| | |
|--------------------------|--|
| Name | CHAF1A (HGNC:1910) |
| Synonyms | CAF, CAF1P150 |
| Function | Acts as a component of the histone chaperone complex chromatin assembly factor 1 (CAF-1), which assembles histone octamers onto DNA during replication and repair. CAF-1 performs the first step of the nucleosome assembly process, bringing newly synthesized histones H3 and H4 to replicating DNA; histones H2A/H2B can bind to this chromatin precursor subsequent to DNA replication to complete the histone octamer. It may play a role in heterochromatin maintenance in proliferating cells by bringing newly synthesized cbx proteins to heterochromatic DNA replication foci. |
| Cellular Location | Nucleus. Note=DNA replication foci |

Images



Please note: All products are 'FOR RESEARCH USE ONLY. NOT FOR USE IN DIAGNOSTIC OR THERAPEUTIC PROCEDURES'.