

CNTN2 Rabbit mAb

Catalog # AP78059

Product Information

Application	WB, IF, FC, ICC
Primary Accession	Q02246
Reactivity	Human, Mouse
Host	Rabbit
Clonality	Monoclonal Antibody
Isotype	IgG
Conjugate	Unconjugated
Immunogen	A synthesized peptide derived from human CNTN2 / TAG1
Purification	Affinity Chromatography
Calculated MW	113393

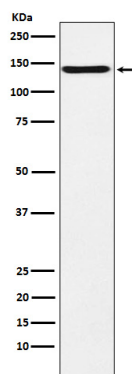
Additional Information

Gene ID	6900
Other Names	CNTN2
Dilution	WB~~1/500-1/1000 IF~~1:50~200 FC~~1:10~50 ICC~~N/A
Format	Liquid in 10mM PBS, pH 7.4, 150mM sodium chloride, 0.05% BSA, 0.02% sodium azide and 50% glycerol.
Storage	Store at 4°C short term. Aliquot and store at -20°C long term. Avoid freeze/thaw cycles.

Protein Information

Name	CNTN2
Synonyms	AXT, TAG1, TAX1
Function	In conjunction with another transmembrane protein, CNTNAP2, contributes to the organization of axonal domains at nodes of Ranvier by maintaining voltage-gated potassium channels at the juxtaparanodal region. May be involved in cell adhesion.
Cellular Location	Cell membrane; Lipid-anchor, GPI-anchor. Note=Attached to the neuronal membrane by a GPI-anchor and is also released from neurons

Images



Please note: All products are 'FOR RESEARCH USE ONLY. NOT FOR USE IN DIAGNOSTIC OR THERAPEUTIC PROCEDURES'.