

Nucleostemin Rabbit mAb

Catalog # AP78036

Product Information

Application	WB, IF, FC, ICC
Primary Accession	Q9BVP2
Reactivity	Human
Host	Rabbit
Clonality	Monoclonal Antibody
Isotype	IgG
Conjugate	Unconjugated
Immunogen	A synthesized peptide derived from human Nucleostemin
Purification	Affinity Chromatography
Calculated MW	61993

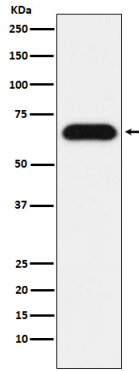
Additional Information

Gene ID	26354
Other Names	GNL3
Dilution	WB~~1/500-1/1000 IF~~1:50~200 FC~~1:10~50 ICC~~N/A
Format	Liquid in 10mM PBS, pH 7.4, 150mM sodium chloride, 0.05% BSA, 0.02% sodium azide and 50% glycerol.
Storage	Store at 4°C short term. Aliquot and store at -20°C long term. Avoid freeze/thaw cycles.

Protein Information

Name	GNL3
Synonyms	E2IG3, NS
Function	May be required to maintain the proliferative capacity of stem cells. Stabilizes MDM2 by preventing its ubiquitination, and hence proteasomal degradation (By similarity).
Cellular Location	Nucleus {ECO:0000250 UniProtKB:Q811S9}. Nucleus, nucleolus. Note=Shuttles between the nucleus and nucleolus. {ECO:0000250 UniProtKB:Q811S9}
Tissue Location	Increased levels in lung tissue in cancer patients.

Images



Please note: All products are 'FOR RESEARCH USE ONLY. NOT FOR USE IN DIAGNOSTIC OR THERAPEUTIC PROCEDURES'.