

Lipin 1 Rabbit mAb

Catalog # AP78028

Product Information

Application	WB, IHC-P, IF, FC, ICC, IP
Primary Accession	Q14693
Reactivity	Human
Host	Rabbit
Clonality	Monoclonal Antibody
Isotype	IgG
Conjugate	Unconjugated
Immunogen	A synthesized peptide derived from human Lipin 1
Purification	Affinity Chromatography
Calculated MW	98664

Additional Information

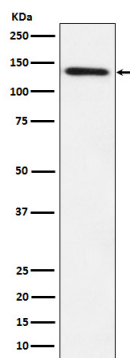
Gene ID	23175
Other Names	LPIN1
Dilution	WB~~1/500-1/1000 IHC-P~~N/A IF~~1:50~200 FC~~1:10~50 ICC~~N/A IP~~N/A
Format	Liquid in 10mM PBS, pH 7.4, 150mM sodium chloride, 0.05% BSA, 0.02% sodium azide and 50% glycerol.
Storage	Store at 4°C short term. Aliquot and store at -20°C long term. Avoid freeze/thaw cycles.

Protein Information

Name	LPIN1 (HGNC:13345)
Synonyms	KIAA0188
Function	Acts as a magnesium-dependent phosphatidate phosphatase enzyme which catalyzes the conversion of phosphatidic acid to diacylglycerol during triglyceride, phosphatidylcholine and phosphatidylethanolamine biosynthesis and therefore controls the metabolism of fatty acids at different levels (PubMed: 20231281 , PubMed: 23426360 , PubMed: 29765047 , PubMed: 31695197). Is involved in adipocyte differentiation (By similarity). Recruited at the mitochondrion outer membrane and is involved in mitochondrial fission by converting phosphatidic acid to diacylglycerol (By similarity). Acts also as nuclear transcriptional coactivator for PPARGC1A/PPARA regulatory pathway to modulate lipid metabolism gene expression (By similarity).

Cellular Location	Cytoplasm, cytosol. Endoplasmic reticulum membrane. Nucleus membrane {ECO:0000250 UniProtKB:Q91ZP3}. Note=Translocates from the cytosol to the endoplasmic reticulum following acetylation by KAT5
Tissue Location	Specifically expressed in skeletal muscle. Also abundant in adipose tissue. Lower levels in some portions of the digestive tract.

Images



Please note: All products are 'FOR RESEARCH USE ONLY. NOT FOR USE IN DIAGNOSTIC OR THERAPEUTIC PROCEDURES'.