

ApoL1 Rabbit mAb

Catalog # AP78018

Product Information

Application	WB, IF, FC, ICC, IP
Primary Accession	O14791
Reactivity	Human
Host	Rabbit
Clonality	Monoclonal Antibody
Isotype	IgG
Conjugate	Unconjugated
Immunogen	A synthesized peptide derived from human APOL1
Purification	Affinity Chromatography
Calculated MW	43974

Additional Information

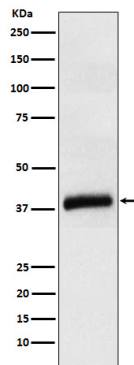
Gene ID	8542
Other Names	APOL1
Dilution	WB~~1/500-1/1000 IF~~1:50~200 FC~~1:10~50 ICC~~N/A IP~~N/A
Format	Liquid in 10mM PBS, pH 7.4, 150mM sodium chloride, 0.05% BSA, 0.02% sodium azide and 50% glycerol.
Storage	Store at 4°C short term. Aliquot and store at -20°C long term. Avoid freeze/thaw cycles.

Protein Information

Name	APOL1 {ECO:0000303 PubMed:19997494}
Synonyms	APOL
Function	May play a role in lipid exchange and transport throughout the body. May participate in reverse cholesterol transport from peripheral cells to the liver. A component of trypanosome lytic factor of human serum; plays a crucial role in killing Trypanosoma brucei by forming pores in parasite lysosomal membranes and sensitizing T.brucei to oxidation-stimulated osmotic lysis (PubMed: 12621437 , PubMed: 16020735 , PubMed: 19997494 , PubMed: 26645690 , PubMed: 7723792).
Cellular Location	Secreted. Note=Internalized through the endocytic pathway into the lysosomes of Trypanosoma brucei
Tissue Location	Plasma. Found on APOA-I-containing high density lipoprotein (HDL3).

Expressed in pancreas, lung, prostate, liver, placenta and spleen

Images



Please note: All products are 'FOR RESEARCH USE ONLY. NOT FOR USE IN DIAGNOSTIC OR THERAPEUTIC PROCEDURES'.