

SOCS2 Rabbit mAb

Catalog # AP78016

Product Information

Application	WB, IF, ICC, IP
Primary Accession	O14508
Reactivity	Human
Host	Rabbit
Clonality	Monoclonal Antibody
Isotype	IgG
Conjugate	Unconjugated
Immunogen	A synthesized peptide derived from human SOCS2
Purification	Affinity Chromatography
Calculated MW	22172

Additional Information

Gene ID	8835
Other Names	SOCS2
Dilution	WB~~1/500-1/1000 IF~~1:50~200 ICC~~N/A IP~~N/A
Format	Liquid in 10mM PBS, pH 7.4, 150mM sodium chloride, 0.05% BSA, 0.02% sodium azide and 50% glycerol.
Storage	Store at 4°C short term. Aliquot and store at -20°C long term. Avoid freeze/thaw cycles.

Protein Information

Name	SOCS2 {ECO:0000303 PubMed:10512686, ECO:0000312 HGNC:HGNC:19382}
Function	Substrate-recognition component of a cullin-5-RING E3 ubiquitin-protein ligase complex (ECS complex, also named CRL5 complex), which mediates the ubiquitination and subsequent proteasomal degradation of target proteins, such as EPOR and GHR (PubMed: 11781573 , PubMed: 21980433 , PubMed: 25505247 , PubMed: 31182716 , PubMed: 34857742). Specifically recognizes and binds phosphorylated proteins via its SH2 domain, promoting their ubiquitination (PubMed: 21980433 , PubMed: 25505247 , PubMed: 31182716 , PubMed: 34857742 , PubMed: 37816714). The ECS(SOCS2) complex acts as a key regulator of growth hormone receptor (GHR) levels by mediating ubiquitination and degradation of GHR, following GHR phosphorylation by JAK2 (PubMed: 21980433 , PubMed: 25505247 , PubMed: 34857742). The ECS(SOCS2) also catalyzes ubiquitination and degradation of JAK2-phosphorylated EPOR (PubMed: 11781573).

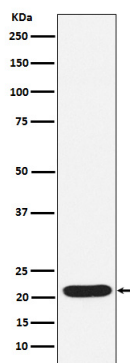
Cellular Location

Cytoplasm.

Tissue Location

High expression in heart, placenta, lung, kidney and prostate. Predominantly expressed in pulmonary epithelia cells, specifically type II pneumocytes.

Images



Please note: All products are 'FOR RESEARCH USE ONLY. NOT FOR USE IN DIAGNOSTIC OR THERAPEUTIC PROCEDURES'.