

Nicastrin Rabbit mAb

Catalog # AP78015

Product Information

Application	WB, IF, ICC
Primary Accession	Q92542
Reactivity	Human
Host	Rabbit
Clonality	Monoclonal Antibody
Isotype	IgG
Conjugate	Unconjugated
Immunogen	A synthesized peptide derived from human Nicastrin
Purification	Affinity Chromatography
Calculated MW	78411

Additional Information

Gene ID	23385
Other Names	NCSTN
Dilution	WB~~1/500-1/1000 IF~~1:50~200 ICC~~N/A
Format	Liquid in 10mM PBS, pH 7.4, 150mM sodium chloride, 0.05% BSA, 0.02% sodium azide and 50% glycerol.
Storage	Store at 4°C short term. Aliquot and store at -20°C long term. Avoid freeze/thaw cycles.

Protein Information

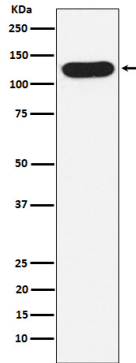
Name	NCSTN
Synonyms	KIAA0253
Function	Essential subunit of the gamma-secretase complex, an endoprotease complex that catalyzes the intramembrane cleavage of integral membrane proteins such as Notch receptors and APP (amyloid- beta precursor protein) (PubMed: 10993067 , PubMed: 12679784 , PubMed: 25043039 , PubMed: 26280335 , PubMed: 30598546 , PubMed: 30630874). The gamma-secretase complex plays a role in Notch and Wnt signaling cascades and regulation of downstream processes via its role in processing key regulatory proteins, and by regulating cytosolic CTNNB1 levels.
Cellular Location	Membrane; Single-pass type I membrane protein. Cytoplasmic vesicle membrane; Single-pass type I membrane protein. Melanosome. Note=Identified by mass spectrometry in melanosome fractions from stage I

to stage IV

Tissue Location

Detected in brain (at protein level) (PubMed:10993067). Widely expressed (PubMed:11396676)

Images



Please note: All products are 'FOR RESEARCH USE ONLY. NOT FOR USE IN DIAGNOSTIC OR THERAPEUTIC PROCEDURES'.