

Sulfotransferase 2A1 Rabbit mAb

Catalog # AP77996

Product Information

Application	WB, IHC-P, IF, FC, ICC
Primary Accession	Q06520
Reactivity	Rat, Human, Mouse
Host	Rabbit
Clonality	Monoclonal Antibody
Isotype	IgG
Conjugate	Unconjugated
Immunogen	A synthesized peptide derived from human SULT2A1
Purification	Affinity Chromatography
Calculated MW	33780

Additional Information

Gene ID	6822
Other Names	SULT2A1
Dilution	WB~~1/500-1/1000 IHC-P~~N/A IF~~1:50~200 FC~~1:10~50 ICC~~N/A
Format	Liquid in 10mM PBS, pH 7.4, 150mM sodium chloride, 0.05% BSA, 0.02% sodium azide and 50% glycerol.
Storage	Store at 4°C short term. Aliquot and store at -20°C long term. Avoid freeze/thaw cycles.

Protein Information

Name	SULT2A1
Synonyms	HST, STD
Function	Sulfotransferase that utilizes 3'-phospho-5'-adenylyl sulfate (PAPS) as sulfonate donor to catalyze the sulfonation of steroids and bile acids in the liver and adrenal glands (PubMed: 14573603 , PubMed: 18042734 , PubMed: 19589875 , PubMed: 20102295 , PubMed: 21187059 , PubMed: 2268288 , PubMed: 29671343 , PubMed: 7678732 , PubMed: 7854148). Mediates the sulfation of a wide range of steroids and sterols, including pregnenolone, androsterone, DHEA, bile acids, cholesterol and as well many xenobiotics that contain alcohol and phenol functional groups (PubMed: 14573603 , PubMed: 18042734 , PubMed: 19589875 , PubMed: 20102295 , PubMed: 21187059 , PubMed: 2268288 , PubMed: 29671343 , PubMed: 7678732 , PubMed: 7854148). Sulfonation increases the water solubility of most compounds, and therefore their renal excretion, but it can also result in

bioactivation to form active metabolites. Plays an important role in maintaining steroid and lipid homeostasis (PubMed:[14573603](#), PubMed:[19589875](#), PubMed:[21187059](#)). Plays a key role in bile acid metabolism, mediating formation of 3-sulfated bile acids (PubMed:[2268288](#), PubMed:[20102295](#)). In addition, catalyzes the metabolic activation of potent carcinogenic polycyclic arylmethanols (By similarity).

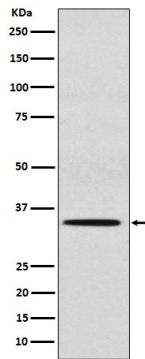
Cellular Location

Cytoplasm.

Tissue Location

Liver, adrenal and at lower level in the kidney. Is present in human fetus in higher level in the adrenal than the liver and the kidney

Images



Please note: All products are 'FOR RESEARCH USE ONLY. NOT FOR USE IN DIAGNOSTIC OR THERAPEUTIC PROCEDURES'.