

E1 Ubiquitin Activating Enzyme Rabbit mAb

Catalog # AP77976

Product Information

Application	WB, IHC-P, IF, FC, ICC
Primary Accession	P22314
Reactivity	Rat, Human, Mouse
Host	Rabbit
Clonality	Monoclonal Antibody
Isotype	IgG
Conjugate	Unconjugated
Immunogen	A synthesized peptide derived from human E1 Ubiquitin Activating Enzyme
Purification	Affinity Chromatography
Calculated MW	117849

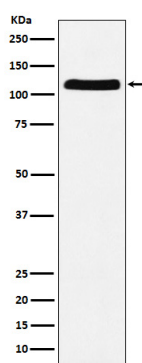
Additional Information

Gene ID	7317
Other Names	UBA1
Dilution	WB~~1/500-1/1000 IHC-P~~N/A IF~~1:50~200 FC~~1:10~50 ICC~~N/A
Format	Liquid in 10mM PBS, pH 7.4, 150mM sodium chloride, 0.05% BSA, 0.02% sodium azide and 50% glycerol.
Storage	Store at 4°C short term. Aliquot and store at -20°C long term. Avoid freeze/thaw cycles.

Protein Information

Name	UBA1
Synonyms	A1S9T, UBE1
Function	Catalyzes the first step in ubiquitin conjugation to mark cellular proteins for degradation through the ubiquitin-proteasome system (PubMed: 1447181 , PubMed: 1606621 , PubMed: 33108101). Activates ubiquitin by first adenylating its C-terminal glycine residue with ATP, and thereafter linking this residue to the side chain of a cysteine residue in E1, yielding a ubiquitin-E1 thioester and free AMP (PubMed: 1447181). Essential for the formation of radiation-induced foci, timely DNA repair and for response to replication stress. Promotes the recruitment of TP53BP1 and BRCA1 at DNA damage sites (PubMed: 22456334).
Cellular Location	Cytoplasm. Mitochondrion. Nucleus [Isoform 2]: Cytoplasm
Tissue Location	Detected in erythrocytes (at protein level). Ubiquitous.

Images



Please note: All products are 'FOR RESEARCH USE ONLY. NOT FOR USE IN DIAGNOSTIC OR THERAPEUTIC PROCEDURES'.