

Nuf2 Rabbit mAb

Catalog # AP77967

Product Information

Application	WB, IF, FC, ICC
Primary Accession	Q9BZD4
Reactivity	Human
Host	Rabbit
Clonality	Monoclonal Antibody
Isotype	IgG
Conjugate	Unconjugated
Immunogen	A synthesized peptide derived from human Nuf2
Purification	Affinity Chromatography
Calculated MW	54304

Additional Information

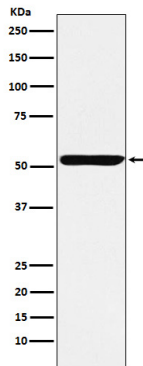
Gene ID	83540
Other Names	NUF2
Dilution	WB~~1/500-1/1000 IF~~1:50~200 FC~~1:10~50 ICC~~N/A
Format	Liquid in 10mM PBS, pH 7.4, 150mM sodium chloride, 0.05% BSA, 0.02% sodium azide and 50% glycerol.
Storage	Store at 4°C short term. Aliquot and store at -20°C long term. Avoid freeze/thaw cycles.

Protein Information

Name	NUF2
Synonyms	CDCA1, NUF2R
Function	Acts as a component of the essential kinetochore-associated NDC80 complex, which is required for chromosome segregation and spindle checkpoint activity (PubMed: 12438418 , PubMed: 14654001 , PubMed: 15062103 , PubMed: 15235793 , PubMed: 15239953 , PubMed: 15548592 , PubMed: 17535814). Required for kinetochore integrity and the organization of stable microtubule binding sites in the outer plate of the kinetochore (PubMed: 15548592). The NDC80 complex synergistically enhances the affinity of the SKA1 complex for microtubules and may allow the NDC80 complex to track depolymerizing microtubules (PubMed: 23085020).
Cellular Location	Nucleus. Chromosome, centromere, kinetochore. Note=Localizes to

kinetochores from late prophase to anaphase Localizes specifically to the outer plate of the kinetochore. NDC80 is required for efficient kinetochore localization

Images



Please note: All products are 'FOR RESEARCH USE ONLY. NOT FOR USE IN DIAGNOSTIC OR THERAPEUTIC PROCEDURES'.