

DNA Ligase I Rabbit mAb

Catalog # AP77963

Product Information

Application	WB, IHC-P, IF, ICC
Primary Accession	P18858
Reactivity	Rat, Human
Host	Rabbit
Clonality	Monoclonal Antibody
Isotype	IgG
Conjugate	Unconjugated
Immunogen	A synthesized peptide derived from human DNA Ligase I
Purification	Affinity Chromatography
Calculated MW	101736

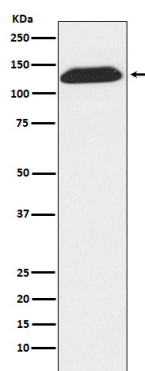
Additional Information

Gene ID	3978
Other Names	LIG1
Dilution	WB~~1/500-1/1000 IHC-P~~N/A IF~~1:50~200 ICC~~N/A
Format	Liquid in 10mM PBS, pH 7.4, 150mM sodium chloride, 0.05% BSA, 0.02% sodium azide and 50% glycerol.
Storage	Store at 4°C short term. Aliquot and store at -20°C long term. Avoid freeze/thaw cycles.

Protein Information

Name	LIG1
Function	DNA ligase that seals nicks in double-stranded during DNA repair (PubMed: 30395541). Also involved in DNA replication and DNA recombination.
Cellular Location	Nucleus.

Images



Please note: All products are 'FOR RESEARCH USE ONLY. NOT FOR USE IN DIAGNOSTIC OR THERAPEUTIC PROCEDURES'.