

Sprouty 4 Rabbit mAb

Catalog # AP77958

Product Information

Application	WB, IF, FC, ICC, IP
Primary Accession	Q9C004
Reactivity	Rat, Human, Mouse
Host	Rabbit
Clonality	Monoclonal Antibody
Isotype	IgG
Conjugate	Unconjugated
Immunogen	A synthesized peptide derived from human Sprouty 4
Purification	Affinity Chromatography
Calculated MW	32541

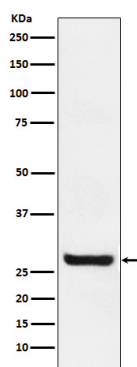
Additional Information

Gene ID	81848
Other Names	SPRY4
Dilution	WB~~1/500-1/1000 IF~~1:50~200 FC~~1:10~50 ICC~~N/A IP~~N/A
Format	Liquid in 10mM PBS, pH 7.4, 150mM sodium chloride, 0.05% BSA, 0.02% sodium azide and 50% glycerol.
Storage	Store at 4°C short term. Aliquot and store at -20°C long term. Avoid freeze/thaw cycles.

Protein Information

Name	SPRY4
Function	Suppresses the insulin receptor and EGFR-transduced MAPK signaling pathway, but does not inhibit MAPK activation by a constitutively active mutant Ras (PubMed: 12027893). Probably impairs the formation of GTP-Ras (PubMed: 12027893). Inhibits Ras-independent, but not Ras-dependent, activation of RAF1 (PubMed: 12717443). Represses integrin-mediated cell spreading via inhibition of TESK1-mediated phosphorylation of cofilin (PubMed: 15584898).
Cellular Location	Cytoplasm. Cell projection, ruffle membrane; Peripheral membrane protein; Cytoplasmic side. Note=Found in the cytoplasm in unstimulated cells but is translocated to the membrane ruffles in cells stimulated with EGF (epidermal growth factor) (By similarity). Colocalizes with TESK1 in vesicular spots in the cytoplasm (PubMed:15584898) {ECO:0000250 UniProtKB:Q9WTP2, ECO:0000269 PubMed:15584898}

Images



Please note: All products are 'FOR RESEARCH USE ONLY. NOT FOR USE IN DIAGNOSTIC OR THERAPEUTIC PROCEDURES'.