

# EB3 Rabbit mAb

Catalog # AP77955

## Product Information

---

<b>Application</b>	WB, IHC-P, IF, FC, ICC
<b>Primary Accession</b>	<a href="#">Q9UPY8</a>
<b>Reactivity</b>	Rat, Human, Mouse
<b>Host</b>	Rabbit
<b>Clonality</b>	Monoclonal Antibody
<b>Isotype</b>	IgG
<b>Conjugate</b>	Unconjugated
<b>Immunogen</b>	A synthesized peptide derived from human EB3
<b>Purification</b>	Affinity Chromatography
<b>Calculated MW</b>	31982

## Additional Information

---

<b>Gene ID</b>	22924
<b>Other Names</b>	MAPRE3
<b>Dilution</b>	WB~~1/500-1/1000 IHC-P~~N/A IF~~1:50~200 FC~~1:10~50 ICC~~N/A
<b>Format</b>	Liquid in 10mM PBS, pH 7.4, 150mM sodium chloride, 0.05% BSA, 0.02% sodium azide and 50% glycerol.
<b>Storage</b>	Store at 4°C short term. Aliquot and store at -20°C long term. Avoid freeze/thaw cycles.

## Protein Information

---

<b>Name</b>	MAPRE3
<b>Function</b>	Plus-end tracking protein (+TIP) that binds to the plus-end of microtubules and regulates the dynamics of the microtubule cytoskeleton (PubMed: <a href="#">19255245</a> , PubMed: <a href="#">28814570</a> ). Promotes microtubule growth (PubMed: <a href="#">19255245</a> , PubMed: <a href="#">28814570</a> ). May be involved in spindle function by stabilizing microtubules and anchoring them at centrosomes (PubMed: <a href="#">19255245</a> , PubMed: <a href="#">28814570</a> ). Also acts as a regulator of minus-end microtubule organization: interacts with the complex formed by AKAP9 and PDE4DIP, leading to recruit CAMSAP2 to the Golgi apparatus, thereby tethering non-centrosomal minus-end microtubules to the Golgi, an important step for polarized cell movement (PubMed: <a href="#">28814570</a> ). Promotes elongation of CAMSAP2-decorated microtubule stretches on the minus-end of microtubules (PubMed: <a href="#">28814570</a> ).
<b>Cellular Location</b>	Cytoplasm, cytoskeleton. Note=Associated with the microtubule network.

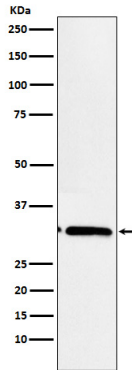
Detected at the plus end of microtubules

**Tissue Location**

Predominantly expressed in brain and muscle.

**Images**

---



Please note: All products are 'FOR RESEARCH USE ONLY. NOT FOR USE IN DIAGNOSTIC OR THERAPEUTIC PROCEDURES'.