

DEK Rabbit mAb

Catalog # AP77952

Product Information

| | |
|--------------------------|--|
| Application | WB, IHC-P, IF, ICC, IP |
| Primary Accession | P35659 |
| Reactivity | Rat, Human |
| Host | Rabbit |
| Clonality | Monoclonal Antibody |
| Isotype | IgG |
| Conjugate | Unconjugated |
| Immunogen | A synthesized peptide derived from human DEK |
| Purification | Affinity Chromatography |
| Calculated MW | 42674 |

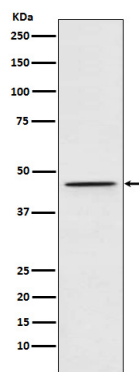
Additional Information

| | |
|--------------------|--|
| Gene ID | 7913 |
| Other Names | DEK |
| Dilution | WB~~1/500-1/1000 IHC-P~~N/A IF~~1:50~200 ICC~~N/A IP~~N/A |
| Format | Liquid in 10mM PBS, pH 7.4, 150mM sodium chloride, 0.05% BSA, 0.02% sodium azide and 50% glycerol. |
| Storage | Store at 4°C short term. Aliquot and store at -20°C long term. Avoid freeze/thaw cycles. |

Protein Information

| | |
|--------------------------|---|
| Name | DEK |
| Function | Involved in chromatin organization. |
| Cellular Location | Nucleus. Note=Enriched in regions where chromatin is decondensed or sparse in the interphase nuclei |
| Tissue Location | Ubiquitous. Expressed at relatively high levels. |

Images



Please note: All products are 'FOR RESEARCH USE ONLY. NOT FOR USE IN DIAGNOSTIC OR THERAPEUTIC PROCEDURES'.