

Dopamine Receptor D3 Rabbit mAb

Catalog # AP77941

Product Information

Application	WB
Primary Accession	P35462
Reactivity	Rat, Human, Mouse
Host	Rabbit
Clonality	Monoclonal Antibody
Isotype	IgG
Conjugate	Unconjugated
Immunogen	A synthesized peptide derived from human Dopamine Receptor D3
Purification	Affinity Chromatography
Calculated MW	44195

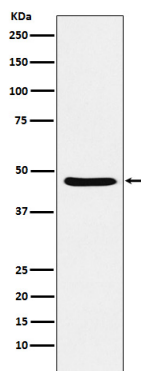
Additional Information

Gene ID	1814
Other Names	DRD3
Dilution	WB~~1/500-1/1000
Format	Liquid in 10mM PBS, pH 7.4, 150mM sodium chloride, 0.05% BSA, 0.02% sodium azide and 50% glycerol.
Storage	Store at 4°C short term. Aliquot and store at -20°C long term. Avoid freeze/thaw cycles.

Protein Information

Name	DRD3 (HGNC:3024)
Function	Dopamine receptor whose activity is mediated by G proteins which inhibit adenylyl cyclase. Promotes cell proliferation.
Cellular Location	Cell membrane; Multi-pass membrane protein. Note=Both membrane-bound and scattered in the cytoplasm during basal conditions Receptor stimulation results in the rapid internalization and sequestration of the receptors at the perinuclear area (5 and 15 minutes), followed by the dispersal of the receptors to the membrane (30 minutes). DRD3 and GRK4 co-localize in lipid rafts of renal proximal tubule cells
Tissue Location	Brain.

Images



Please note: All products are 'FOR RESEARCH USE ONLY. NOT FOR USE IN DIAGNOSTIC OR THERAPEUTIC PROCEDURES'.