

NUP153 Rabbit mAb

Catalog # AP77915

Product Information

Application	WB, IF, FC, ICC
Primary Accession	P49790
Reactivity	Human
Host	Rabbit
Clonality	Monoclonal Antibody
Isotype	IgG
Conjugate	Unconjugated
Immunogen	A synthesized peptide derived from human Nup153
Purification	Affinity Chromatography
Calculated MW	153938

Additional Information

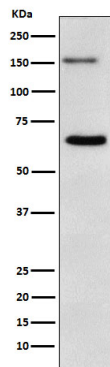
Gene ID	9972
Other Names	NUP153
Dilution	WB~~1/500-1/1000 IF~~1:50~200 FC~~1:10~50 ICC~~N/A
Format	Liquid in 10mM PBS, pH 7.4, 150mM sodium chloride, 0.05% BSA, 0.02% sodium azide and 50% glycerol.
Storage	Store at 4°C short term. Aliquot and store at -20°C long term. Avoid freeze/thaw cycles.

Protein Information

Name	NUP153
Function	Component of the nuclear pore complex (NPC), a complex required for the trafficking across the nuclear envelope. Functions as a scaffolding element in the nuclear phase of the NPC essential for normal nucleocytoplasmic transport of proteins and mRNAs. Involved in the quality control and retention of unspliced mRNAs in the nucleus; in association with TPR, regulates the nuclear export of unspliced mRNA species bearing constitutive transport element (CTE) in a NXF1- and KHDRBS1-independent manner. Mediates TPR anchoring to the nuclear membrane at NPC. The repeat-containing domain may be involved in anchoring other components of the NPC to the pore membrane. Possible DNA-binding subunit of the nuclear pore complex (NPC).
Cellular Location	Nucleus. Nucleus membrane. Nucleus, nuclear pore complex. Note=Tightly associated with the nuclear membrane and lamina (By similarity). Localized to

the nucleoplasmic side of the nuclear pore complex (NPC) core structure, forming a fibrous structure called the nuclear basket. Dissociates from the NPC structure early during prophase of mitosis. Integrated in the newly assembled nuclear envelope of postmitotic cells early in G1 Colocalized with NUP98 and TPR to the nuclear basket at the nucleoplasmic side of the NPC. Detected in diffuse and discrete intranuclear foci. Remained localized to the nuclear membrane after poliovirus (PV) infection. Colocalizes with NUP210L at the nuclear periphery in round spermatids and at the caudal extremity in elongating spermatids (PubMed:38129135). {ECO:0000250, ECO:0000269 | PubMed:38129135}

Images



Please note: All products are 'FOR RESEARCH USE ONLY. NOT FOR USE IN DIAGNOSTIC OR THERAPEUTIC PROCEDURES'.