

FHL1 Rabbit mAb

Catalog # AP77914

Product Information

Application	WB, IHC-P, IP
Primary Accession	Q13642
Reactivity	Rat, Human, Mouse
Host	Rabbit
Clonality	Monoclonal Antibody
Isotype	IgG
Conjugate	Unconjugated
Immunogen	A synthesized peptide derived from human FHL1
Purification	Affinity Chromatography
Calculated MW	36263

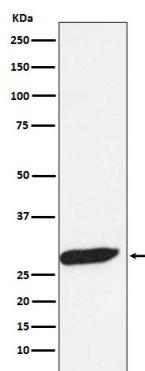
Additional Information

Gene ID	2273
Other Names	FHL1
Dilution	WB~~1/500-1/1000 IHC-P~~N/A IP~~N/A
Format	Liquid in 10mM PBS, pH 7.4, 150mM sodium chloride, 0.05% BSA, 0.02% sodium azide and 50% glycerol.
Storage	Store at 4°C short term. Aliquot and store at -20°C long term. Avoid freeze/thaw cycles.

Protein Information

Name	FHL1
Synonyms	SLIM1
Function	May have an involvement in muscle development or hypertrophy.
Cellular Location	[Isoform 1]: Cytoplasm. [Isoform 2]: Nucleus. Cytoplasm, cytosol. Note=Predominantly nuclear in myoblasts but is cytosolic in differentiated myotubes
Tissue Location	Isoform 1 is highly expressed in skeletal muscle and to a lesser extent in heart, placenta, ovary, prostate, testis, small intestine, colon and spleen. Expression is barely detectable in brain, lung, liver, kidney, pancreas, thymus and peripheral blood leukocytes. Isoform 2 is expressed in brain, skeletal muscle and to a lesser extent in heart, colon, prostate and small intestine. Isoform 3 is expressed in testis, heart and skeletal muscle

Images



Please note: All products are 'FOR RESEARCH USE ONLY. NOT FOR USE IN DIAGNOSTIC OR THERAPEUTIC PROCEDURES'.