

CPS1 Rabbit mAb

Catalog # AP77912

Product Information

Application	WB, IHC-P, IF, ICC, IP
Primary Accession	P31327
Reactivity	Rat, Human, Mouse
Host	Rabbit
Clonality	Monoclonal Antibody
Isotype	IgG
Conjugate	Unconjugated
Immunogen	A synthesized peptide derived from human CPS1
Purification	Affinity Chromatography
Calculated MW	164939

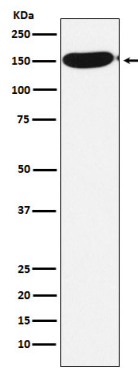
Additional Information

Gene ID	1373
Other Names	CPS1
Dilution	WB~~1/500-1/1000 IHC-P~~N/A IF~~1:50~200 ICC~~N/A IP~~N/A
Format	Liquid in 10mM PBS, pH 7.4, 150mM sodium chloride, 0.05% BSA, 0.02% sodium azide and 50% glycerol.
Storage	Store at 4°C short term. Aliquot and store at -20°C long term. Avoid freeze/thaw cycles.

Protein Information

Name	CPS1
Function	Involved in the urea cycle of ureotelic animals where the enzyme plays an important role in removing excess ammonia from the cell.
Cellular Location	Mitochondrion. Nucleus, nucleolus. Cell membrane {ECO:0000250 UniProtKB:Q8C196}; Peripheral membrane protein; Extracellular side {ECO:0000250 UniProtKB:Q8C196} Note=Localizes to the cell surface of hepatocytes {ECO:0000250 UniProtKB:Q8C196}
Tissue Location	Primarily in the liver and small intestine.

Images



Please note: All products are 'FOR RESEARCH USE ONLY. NOT FOR USE IN DIAGNOSTIC OR THERAPEUTIC PROCEDURES'.