

# NAPSIN A Rabbit mAb

Catalog # AP77900

## Product Information

---

<b>Application</b>	WB, IHC-P, IP
<b>Primary Accession</b>	<a href="#">O96009</a>
<b>Reactivity</b>	Human
<b>Host</b>	Rabbit
<b>Clonality</b>	Monoclonal Antibody
<b>Isotype</b>	IgG
<b>Conjugate</b>	Unconjugated
<b>Immunogen</b>	A synthesized peptide derived from human NAPSIN A
<b>Purification</b>	Affinity Chromatography
<b>Calculated MW</b>	45387

## Additional Information

---

<b>Gene ID</b>	9476
<b>Other Names</b>	NAPSA
<b>Dilution</b>	WB~~1/500-1/1000 IHC-P~~N/A IP~~N/A
<b>Format</b>	Liquid in 10mM PBS, pH 7.4, 150mM sodium chloride, 0.05% BSA, 0.02% sodium azide and 50% glycerol.
<b>Storage</b>	Store at 4°C short term. Aliquot and store at -20°C long term. Avoid freeze/thaw cycles.

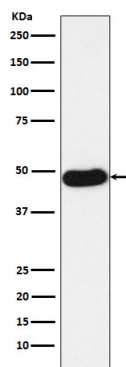
## Protein Information

---

<b>Name</b>	NAPSA
<b>Synonyms</b>	NAP1, NAPA
<b>Function</b>	May be involved in processing of pneumocyte surfactant precursors.
<b>Cellular Location</b>	Secreted.
<b>Tissue Location</b>	Expressed predominantly in adult lung (type II pneumocytes) and kidney and in fetal lung. Low levels in adult spleen and very low levels in peripheral blood leukocytes

## Images

---



Please note: All products are 'FOR RESEARCH USE ONLY. NOT FOR USE IN DIAGNOSTIC OR THERAPEUTIC PROCEDURES'.