

# IL-13 Receptor alpha 1 Rabbit mAb

Catalog # AP77897

## Product Information

---

<b>Application</b>	WB
<b>Primary Accession</b>	<a href="#">P78552</a>
<b>Reactivity</b>	Human
<b>Host</b>	Rabbit
<b>Clonality</b>	Monoclonal Antibody
<b>Isotype</b>	IgG
<b>Conjugate</b>	Unconjugated
<b>Immunogen</b>	A synthesized peptide derived from human IL13 receptor alpha 1
<b>Purification</b>	Affinity Chromatography
<b>Calculated MW</b>	48760

## Additional Information

---

<b>Gene ID</b>	3597
<b>Other Names</b>	IL13RA1
<b>Dilution</b>	WB~~1/500-1/1000
<b>Format</b>	Liquid in 10mM PBS, pH 7.4, 150mM sodium chloride, 0.05% BSA, 0.02% sodium azide and 50% glycerol.
<b>Storage</b>	Store at 4°C short term. Aliquot and store at -20°C long term. Avoid freeze/thaw cycles.

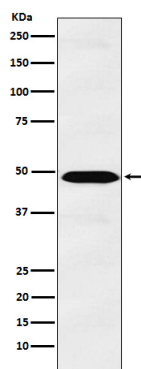
## Protein Information

---

<b>Name</b>	IL13RA1
<b>Synonyms</b>	IL13R, IL13RA
<b>Function</b>	Binds with low affinity to interleukin-13 (IL13). Together with IL4RA can form a functional receptor for IL13. Also serves as an alternate accessory protein to the common cytokine receptor gamma chain for interleukin-4 (IL4) signaling, but cannot replace the function of IL2RG in allowing enhanced interleukin-2 (IL2) binding activity.
<b>Cellular Location</b>	Membrane; Single-pass type I membrane protein.
<b>Tissue Location</b>	Ubiquitous. Highest levels in heart, liver, skeletal muscle and ovary; lowest levels in brain, lung and kidney Also found in B-cells, T-cells and endothelial cells

## Images

---



Please note: All products are 'FOR RESEARCH USE ONLY. NOT FOR USE IN DIAGNOSTIC OR THERAPEUTIC PROCEDURES'.