

Cathepsin S Rabbit mAb

Catalog # AP77894

Product Information

Application	WB, IHC-P, IF, ICC
Primary Accession	P25774
Reactivity	Human
Host	Rabbit
Clonality	Monoclonal Antibody
Isotype	IgG
Conjugate	Unconjugated
Immunogen	A synthesized peptide derived from human Cathepsin S
Purification	Affinity Chromatography
Calculated MW	37496

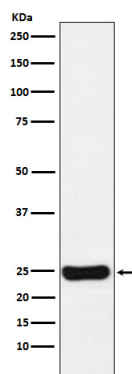
Additional Information

Gene ID	1520
Other Names	CTSS
Dilution	WB~~1/500-1/1000 IHC-P~~N/A IF~~1:50~200 ICC~~N/A
Format	Liquid in 10mM PBS, pH 7.4, 150mM sodium chloride, 0.05% BSA, 0.02% sodium azide and 50% glycerol.
Storage	Store at 4°C short term. Aliquot and store at -20°C long term. Avoid freeze/thaw cycles.

Protein Information

Name	CTSS
Function	Thiol protease. Key protease responsible for the removal of the invariant chain from MHC class II molecules and MHC class II antigen presentation (PubMed: 30612035). The bond-specificity of this proteinase is in part similar to the specificities of cathepsin L.
Cellular Location	Lysosome. Secreted. Cytoplasmic vesicle, phagosome

Images



Please note: All products are 'FOR RESEARCH USE ONLY. NOT FOR USE IN DIAGNOSTIC OR THERAPEUTIC PROCEDURES'.