

CD48 Rabbit mAb

Catalog # AP77889

Product Information

Application	WB, IHC-P, IF, ICC, IP
Primary Accession	P09326
Reactivity	Human
Host	Rabbit
Clonality	Monoclonal Antibody
Isotype	IgG
Conjugate	Unconjugated
Immunogen	A synthesized peptide derived from human CD48
Purification	Affinity Chromatography
Calculated MW	27683

Additional Information

Gene ID	962
Other Names	CD48
Dilution	WB~~1/500-1/1000 IHC-P~~N/A IF~~1:50~200 ICC~~N/A IP~~N/A
Format	Liquid in 10mM PBS, pH 7.4, 150mM sodium chloride, 0.05% BSA, 0.02% sodium azide and 50% glycerol.
Storage	Store at 4°C short term. Aliquot and store at -20°C long term. Avoid freeze/thaw cycles.

Protein Information

Name	CD48
Synonyms	BCM1, BLAST1
Function	Glycosylphosphatidylinositol (GPI)-anchored cell surface glycoprotein that interacts via its N-terminal immunoglobulin domain with cell surface receptors including CD244/2B4 or CD2 to regulate immune cell function and activation (PubMed: 12007789 , PubMed: 19494291 , PubMed: 27249817 , PubMed: 9841922). Participates in T-cell signaling transduction by associating with CD2 and efficiently bringing the Src family protein kinase LCK and LAT to the TCR/CD3 complex (PubMed: 19494291). In turn, promotes LCK phosphorylation and subsequent activation (PubMed: 12007789). Induces the phosphorylation of the cytoplasmic immunoreceptor tyrosine switch motifs (ITSMs) of CD244 initiating a series of signaling events that leads to the generation of the immunological synapse and the directed release of cytolytic granules containing perforin and granzymes by T-lymphocytes and NK- cells

(PubMed:[27249817](#)).

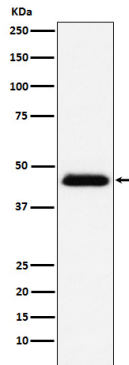
Cellular Location

Cell membrane; Lipid-anchor, GPI-anchor. Membrane raft. Secreted

Tissue Location

Widely expressed on all hematopoietic cells.

Images



Please note: All products are 'FOR RESEARCH USE ONLY. NOT FOR USE IN DIAGNOSTIC OR THERAPEUTIC PROCEDURES'.