

# IGFBP2 Rabbit mAb

Catalog # AP77886

## Product Information

---

<b>Application</b>	WB, IHC-P
<b>Primary Accession</b>	<a href="#">P18065</a>
<b>Reactivity</b>	Human
<b>Host</b>	Rabbit
<b>Clonality</b>	Monoclonal Antibody
<b>Isotype</b>	IgG
<b>Conjugate</b>	Unconjugated
<b>Immunogen</b>	A synthesized peptide derived from human IGFBP2
<b>Purification</b>	Affinity Chromatography
<b>Calculated MW</b>	34814

## Additional Information

---

<b>Gene ID</b>	3485
<b>Other Names</b>	IGFBP2
<b>Dilution</b>	WB~~1/500-1/1000 IHC-P~~N/A
<b>Format</b>	Liquid in 10mM PBS, pH 7.4, 150mM sodium chloride, 0.05% BSA, 0.02% sodium azide and 50% glycerol.
<b>Storage</b>	Store at 4°C short term. Aliquot and store at -20°C long term. Avoid freeze/thaw cycles.

## Protein Information

---

<b>Name</b>	IGFBP2
<b>Synonyms</b>	BP2, IBP2
<b>Function</b>	Multifunctional protein that plays a critical role in regulating the availability of IGFs such as IGF1 and IGF2 to their receptors and thereby regulates IGF-mediated cellular processes including proliferation, differentiation, and apoptosis in a cell-type specific manner (PubMed: <a href="#">18563800</a> , PubMed: <a href="#">38796567</a> ). Functions coordinately with receptor protein tyrosine phosphatase beta/PTPRB and the IGF1 receptor to regulate IGF1-mediated signaling by stimulating the phosphorylation of PTEN leading to its inactivation and AKT1 activation (PubMed: <a href="#">22869525</a> ). Plays a positive role in cell migration via interaction with integrin alpha5/ITGA5 through an RGD motif (PubMed: <a href="#">16569642</a> ). Additionally, interaction with ITGA5/ITGB1 enhances the adhesion of endothelial progenitor cells to endothelial cells (PubMed: <a href="#">26076738</a> ). Upon mitochondrial damage, facilitates apoptosis with

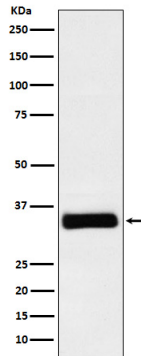
ITGA5 of podocytes, and then activates the phosphorylation of focal adhesion kinase (FAK)-mediated mitochondrial injury (PubMed:[38796567](#)).

**Cellular Location**

Secreted

**Images**

---



Please note: All products are 'FOR RESEARCH USE ONLY. NOT FOR USE IN DIAGNOSTIC OR THERAPEUTIC PROCEDURES'.