

# C3 Rabbit mAb

Catalog # AP77882

## Product Information

---

<b>Application</b>	WB, IP
<b>Primary Accession</b>	<a href="#">P01024</a>
<b>Reactivity</b>	Human
<b>Host</b>	Rabbit
<b>Clonality</b>	Monoclonal Antibody
<b>Isotype</b>	IgG
<b>Conjugate</b>	Unconjugated
<b>Immunogen</b>	A synthesized peptide derived from human C3 / C3a
<b>Purification</b>	Affinity Chromatography
<b>Calculated MW</b>	187148

## Additional Information

---

<b>Gene ID</b>	718
<b>Other Names</b>	C3
<b>Dilution</b>	WB~~1/500-1/1000 IP~~N/A
<b>Format</b>	Liquid in 10mM PBS, pH 7.4, 150mM sodium chloride, 0.05% BSA, 0.02% sodium azide and 50% glycerol.
<b>Storage</b>	Store at 4°C short term. Aliquot and store at -20°C long term. Avoid freeze/thaw cycles.

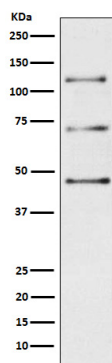
## Protein Information

---

<b>Name</b>	C3 {ECO:0000303   PubMed:2579379, ECO:0000312   HGNC:HGNC:1318}
<b>Function</b>	Precursor of non-enzymatic components of the classical, alternative, lectin and GZMK complement pathways, which consist in a cascade of proteins that leads to phagocytosis and breakdown of pathogens and signaling that strengthens the adaptive immune system.
<b>Cellular Location</b>	Secreted. [C3a anaphylatoxin]: Secreted
<b>Tissue Location</b>	Plasma..

## Images

---



Please note: All products are 'FOR RESEARCH USE ONLY. NOT FOR USE IN DIAGNOSTIC OR THERAPEUTIC PROCEDURES'.