

NKX2.2 Rabbit mAb

Catalog # AP77855

Product Information

Application	IHC-P, IF, ICC
Primary Accession	O95096
Reactivity	Rat, Human, Mouse
Host	Rabbit
Clonality	Monoclonal Antibody
Isotype	IgG
Conjugate	Unconjugated
Immunogen	A synthesized peptide derived from human NKX2.2
Purification	Affinity Chromatography
Calculated MW	30133

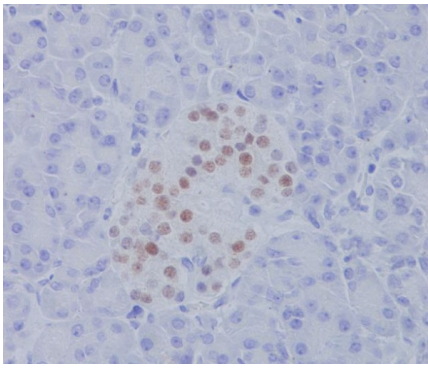
Additional Information

Gene ID	4821
Other Names	NKX2-2
Dilution	IHC-P~~N/A IF~~1:50~200 ICC~~N/A
Format	Liquid in 10mM PBS, pH 7.4, 150mM sodium chloride, 0.05% BSA, 0.02% sodium azide and 50% glycerol.
Storage	Store at 4°C short term. Aliquot and store at -20°C long term. Avoid freeze/thaw cycles.

Protein Information

Name	NKX2-2
Synonyms	NKX2.2, NKX2B
Function	Transcriptional activator involved in the development of insulin-producing beta cells in the endocrine pancreas (By similarity). May also be involved in specifying diencephalic neuromeric boundaries, and in controlling the expression of genes that play a role in axonal guidance. Binds to elements within the NEUROD1 promoter (By similarity).
Cellular Location	Nucleus {ECO:0000255 PROSITE-ProRule:PRU00108}.

Images



Please note: All products are 'FOR RESEARCH USE ONLY. NOT FOR USE IN DIAGNOSTIC OR THERAPEUTIC PROCEDURES'.