

# Iba1 Rabbit mAb

Catalog # AP77847

## Product Information

---

<b>Application</b>	WB, IHC-P, IF, FC, ICC
<b>Primary Accession</b>	<a href="#">P55008</a>
<b>Reactivity</b>	Human
<b>Host</b>	Rabbit
<b>Clonality</b>	Monoclonal Antibody
<b>Isotype</b>	IgG
<b>Conjugate</b>	Unconjugated
<b>Immunogen</b>	A synthesized peptide derived from human IBA1
<b>Purification</b>	Affinity Chromatography
<b>Calculated MW</b>	16703

## Additional Information

---

<b>Gene ID</b>	199
<b>Other Names</b>	AIF1
<b>Dilution</b>	WB~~1/500-1/1000 IHC-P~~N/A IF~~1:50~200 FC~~1:10~50 ICC~~N/A
<b>Format</b>	Liquid in 10mM PBS, pH 7.4, 150mM sodium chloride, 0.05% BSA, 0.02% sodium azide and 50% glycerol.
<b>Storage</b>	Store at 4°C short term. Aliquot and store at -20°C long term. Avoid freeze/thaw cycles.

## Protein Information

---

<b>Name</b>	AIF1
<b>Synonyms</b>	G1, IBA1
<b>Function</b>	Actin-binding protein that enhances membrane ruffling and RAC activation. Enhances the actin-bundling activity of LCP1. Binds calcium. Plays a role in RAC signaling and in phagocytosis. May play a role in macrophage activation and function. Promotes the proliferation of vascular smooth muscle cells and of T-lymphocytes. Enhances lymphocyte migration. Plays a role in vascular inflammation.
<b>Cellular Location</b>	Cytoplasm, cytoskeleton {ECO:0000250 UniProtKB:O70200}. Cell projection, ruffle membrane {ECO:0000250 UniProtKB:O70200}; Peripheral membrane protein {ECO:0000250 UniProtKB:O70200}; Cytoplasmic side {ECO:0000250 UniProtKB:O70200}. Cell projection, phagocytic cup {ECO:0000250 UniProtKB:O70200}. Note=Associated with the actin

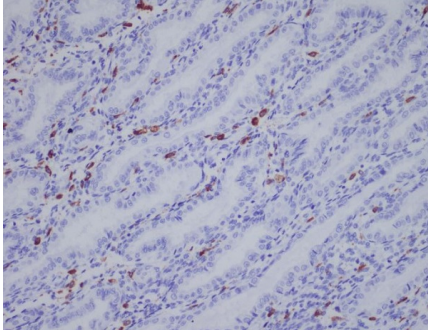
cytoskeleton at membrane ruffles and at sites of phagocytosis  
{ECO:0000250|UniProtKB:O70200}

**Tissue Location**

Detected in T-lymphocytes and peripheral blood mononuclear cells.

**Images**

---



Please note: All products are 'FOR RESEARCH USE ONLY. NOT FOR USE IN DIAGNOSTIC OR THERAPEUTIC PROCEDURES'.