

H Cadherin Rabbit mAb

Catalog # AP77835

Product Information

Application	WB, IHC-P
Primary Accession	P55290
Reactivity	Rat, Human, Mouse
Host	Rabbit
Clonality	Monoclonal Antibody
Isotype	IgG
Conjugate	Unconjugated
Immunogen	A synthesized peptide derived from human H Cadherin
Purification	Affinity Chromatography
Calculated MW	78287

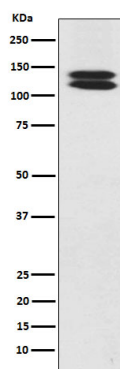
Additional Information

Gene ID	1012
Other Names	CDH13
Dilution	WB~~1/500-1/1000 IHC-P~~N/A
Format	Liquid in 10mM PBS, pH 7.4, 150mM sodium chloride, 0.05% BSA, 0.02% sodium azide and 50% glycerol.
Storage	Store at 4°C short term. Aliquot and store at -20°C long term. Avoid freeze/thaw cycles.

Protein Information

Name	CDH13
Synonyms	CDHH
Function	Cadherins are calcium-dependent cell adhesion proteins. They preferentially interact with themselves in a homophilic manner in connecting cells; cadherins may thus contribute to the sorting of heterogeneous cell types. May act as a negative regulator of neural cell growth.
Cellular Location	Cell membrane {ECO:0000250 UniProtKB:Q9WTR5}; Lipid-anchor, GPI-anchor. Cytoplasm {ECO:0000250 UniProtKB:Q9WTR5}
Tissue Location	Highly expressed in heart. In the CNS, expressed in cerebral cortex, medulla, hippocampus, amygdala, thalamus and substantia nigra. No expression detected in cerebellum or spinal cord

Images



Please note: All products are 'FOR RESEARCH USE ONLY. NOT FOR USE IN DIAGNOSTIC OR THERAPEUTIC PROCEDURES'.