

Parathyroid Hormone Receptor 1 Rabbit mAb

Catalog # AP77828

Product Information

Application	WB, IP
Primary Accession	Q03431
Reactivity	Human
Host	Rabbit
Clonality	Monoclonal Antibody
Isotype	IgG
Conjugate	Unconjugated
Immunogen	A synthesized peptide derived from human Parathyroid Hormone Receptor 1
Purification	Affinity Chromatography
Calculated MW	66361

Additional Information

Gene ID	5745
Other Names	PTH1R
Dilution	WB~~1/500-1/1000 IP~~N/A
Format	Liquid in 10mM PBS, pH 7.4, 150mM sodium chloride, 0.05% BSA, 0.02% sodium azide and 50% glycerol.
Storage	Store at 4°C short term. Aliquot and store at -20°C long term. Avoid freeze/thaw cycles.

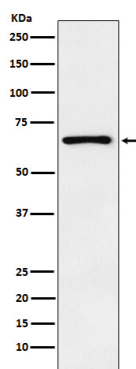
Protein Information

Name	PTH1R {ECO:0000303 PubMed:10913300, ECO:0000312 HGNC:HGNC:9608}
Function	G-protein-coupled receptor for parathyroid hormone (PTH) and for parathyroid hormone-related peptide (PTHrP) (PubMed: 10913300 , PubMed: 18375760 , PubMed: 19674967 , PubMed: 27160269 , PubMed: 30975883 , PubMed: 35932760 , PubMed: 8397094). Ligand binding causes a conformation change that triggers signaling via guanine nucleotide-binding proteins (G proteins) and modulates the activity of downstream effectors, such as adenylate cyclase (cAMP) (PubMed: 30975883 , PubMed: 35932760). PTH1R is coupled to G(s) G alpha proteins and mediates activation of adenylate cyclase activity (PubMed: 20172855 , PubMed: 30975883 , PubMed: 35932760). PTHrP dissociates from PTH1R more rapidly than PTH; as consequence, the cAMP response induced by PTHrP decays faster than the response induced by PTH (PubMed: 35932760).
Cellular Location	Cell membrane; Multi-pass membrane protein

Tissue Location

Expressed in most tissues. Most abundant in kidney, bone and liver.

Images



Please note: All products are 'FOR RESEARCH USE ONLY. NOT FOR USE IN DIAGNOSTIC OR THERAPEUTIC PROCEDURES'.