

Hemopexin Rabbit mAb

Catalog # AP77776

Product Information

| | |
|--------------------------|--|
| Application | WB, IHC-P, IF, ICC, IP |
| Primary Accession | P02790 |
| Reactivity | Human |
| Host | Rabbit |
| Clonality | Monoclonal Antibody |
| Isotype | IgG |
| Conjugate | Unconjugated |
| Immunogen | A synthesized peptide derived from human Hemopexin |
| Purification | Affinity Chromatography |
| Calculated MW | 51676 |

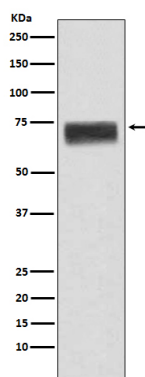
Additional Information

| | |
|--------------------|--|
| Gene ID | 3263 |
| Other Names | HPX |
| Dilution | WB~~1/500-1/1000 IHC-P~~N/A IF~~1:50~200 ICC~~N/A IP~~N/A |
| Format | Liquid in 10mM PBS, pH 7.4, 150mM sodium chloride, 0.05% BSA, 0.02% sodium azide and 50% glycerol. |
| Storage | Store at 4°C short term. Aliquot and store at -20°C long term. Avoid freeze/thaw cycles. |

Protein Information

| | |
|--------------------------|---|
| Name | HPX |
| Function | Binds heme and transports it to the liver for breakdown and iron recovery, after which the free hemopexin returns to the circulation. |
| Cellular Location | Secreted. |
| Tissue Location | Expressed by the liver and secreted in plasma. |

Images



Please note: All products are 'FOR RESEARCH USE ONLY. NOT FOR USE IN DIAGNOSTIC OR THERAPEUTIC PROCEDURES'.