

GAL4 Rabbit mAb

Catalog # AP77757

Product Information

Application	WB, IHC-P
Primary Accession	P56470
Reactivity	Rat, Human
Host	Rabbit
Clonality	Monoclonal Antibody
Isotype	IgG
Conjugate	Unconjugated
Immunogen	A synthesized peptide derived from human GAL4
Purification	Affinity Chromatography
Calculated MW	35941

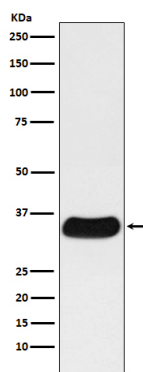
Additional Information

Gene ID	3960
Other Names	LGALS4
Dilution	WB~~1/500-1/1000 IHC-P~~N/A
Format	Liquid in 10mM PBS, pH 7.4, 150mM sodium chloride, 0.05% BSA, 0.02% sodium azide and 50% glycerol.
Storage	Store at 4°C short term. Aliquot and store at -20°C long term. Avoid freeze/thaw cycles.

Protein Information

Name	LGALS4
Function	Galectin that binds lactose and a related range of sugars. May be involved in the assembly of adherens junctions.

Images



Please note: All products are 'FOR RESEARCH USE ONLY. NOT FOR USE IN DIAGNOSTIC OR THERAPEUTIC PROCEDURES'.