

PDE4D Rabbit mAb

Catalog # AP77754

Product Information

Application	WB
Primary Accession	Q08499
Reactivity	Human
Host	Rabbit
Clonality	Monoclonal Antibody
Isotype	IgG
Conjugate	Unconjugated
Immunogen	A synthesized peptide derived from human PDE4D
Purification	Affinity Chromatography
Calculated MW	91115

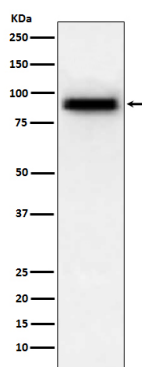
Additional Information

Gene ID	5144
Other Names	PDE4D
Dilution	WB~~1/500-1/1000
Format	Liquid in 10mM PBS, pH 7.4, 150mM sodium chloride, 0.05% BSA, 0.02% sodium azide and 50% glycerol.
Storage	Store at 4°C short term. Aliquot and store at -20°C long term. Avoid freeze/thaw cycles.

Protein Information

Name	PDE4D (HGNC:8783)
Synonyms	DPDE3
Function	Hydrolyzes the second messenger cAMP, which is a key regulator of many important physiological processes.
Cellular Location	Apical cell membrane. Cytoplasm. Membrane. Cytoplasm, cytoskeleton. Cytoplasm, cytoskeleton, microtubule organizing center, centrosome Note=Found in the soluble fraction, associated with membranes, and associated with the cytoskeleton and the centrosome (By similarity) Colocalized with SHANK2 to the apical membrane of colonic crypt cells
Tissue Location	Expressed in colonic epithelial cells (at protein level). Widespread; most abundant in skeletal muscle [Isoform 8]; Detected in brain, placenta, lung and kidney.

Images



Please note: All products are 'FOR RESEARCH USE ONLY. NOT FOR USE IN DIAGNOSTIC OR THERAPEUTIC PROCEDURES'.