

mSin3A Rabbit mAb

Catalog # AP77746

Product Information

Application	WB, IHC-P, IF, FC, ICC
Primary Accession	Q96ST3
Reactivity	Rat, Human, Mouse
Host	Rabbit
Clonality	Monoclonal Antibody
Isotype	IgG
Conjugate	Unconjugated
Immunogen	A synthesized peptide derived from human mSin3A
Purification	Affinity Chromatography
Calculated MW	145175

Additional Information

Gene ID	25942
Other Names	SIN3A
Dilution	WB~~1/500-1/1000 IHC-P~~N/A IF~~1:50~200 FC~~1:10~50 ICC~~N/A
Format	Liquid in 10mM PBS, pH 7.4, 150mM sodium chloride, 0.05% BSA, 0.02% sodium azide and 50% glycerol.
Storage	Store at 4°C short term. Aliquot and store at -20°C long term. Avoid freeze/thaw cycles.

Protein Information

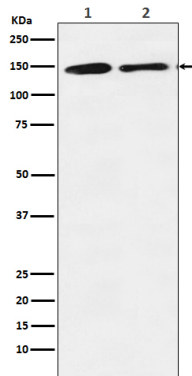
Name	SIN3A (HGNC:19353)
Function	Acts as a transcriptional repressor. Corepressor for REST. Interacts with MXI1 to repress MYC responsive genes and antagonize MYC oncogenic activities. Also interacts with MXD1-MAX heterodimers to repress transcription by tethering SIN3A to DNA. Acts cooperatively with OGT to repress transcription in parallel with histone deacetylation. Involved in the control of the circadian rhythms. Required for the transcriptional repression of circadian target genes, such as PER1, mediated by the large PER complex through histone deacetylation. Cooperates with FOXK1 to regulate cell cycle progression probably by repressing cell cycle inhibitor genes expression (By similarity). Required for cortical neuron differentiation and callosal axon elongation (By similarity).
Cellular Location	Nucleus {ECO:0000255 PROSITE-ProRule:PRU00810, ECO:0000269 PubMed:16820529}. Nucleus, nucleolus. Note=Recruited to the

nucleolus by SAP30L

Tissue Location

Expressed in the developing brain, with highest levels of expression detected in the ventricular zone of various cortical regions.

Images



Please note: All products are 'FOR RESEARCH USE ONLY. NOT FOR USE IN DIAGNOSTIC OR THERAPEUTIC PROCEDURES'.