

KIF3A Rabbit mAb

Catalog # AP77741

Product Information

Application	WB, IP
Primary Accession	Q9Y496
Reactivity	Rat, Human, Mouse
Host	Rabbit
Clonality	Monoclonal Antibody
Isotype	IgG
Conjugate	Unconjugated
Immunogen	A synthesized peptide derived from human KIF3A
Purification	Affinity Chromatography
Calculated MW	80041

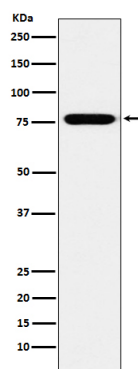
Additional Information

Gene ID	11127
Other Names	KIF3A
Dilution	WB~~1/500-1/1000 IP~~N/A
Format	Liquid in 10mM PBS, pH 7.4, 150mM sodium chloride, 0.05% BSA, 0.02% sodium azide and 50% glycerol.
Storage	Store at 4°C short term. Aliquot and store at -20°C long term. Avoid freeze/thaw cycles.

Protein Information

Name	KIF3A
Synonyms	KIF3
Function	Microtubule-based anterograde translocator for membranous organelles. Plus end-directed microtubule sliding activity in vitro. Plays a role in primary cilia formation. Plays a role in centriole cohesion and subdistal appendage organization and function. Regulates the formation of the subdistal appendage via recruitment of DCTN1 to the centriole. Also required for ciliary basal feet formation and microtubule anchoring to mother centriole.
Cellular Location	Cytoplasm, cytoskeleton. Cell projection, cilium {ECO:0000250 UniProtKB:P28741}. Cytoplasm, cytoskeleton, microtubule organizing center, centrosome, centriole. Note=Localizes to the subdistal appendage region of the centriole.

Images



Please note: All products are 'FOR RESEARCH USE ONLY. NOT FOR USE IN DIAGNOSTIC OR THERAPEUTIC PROCEDURES'.