

OGG1 Rabbit mAb

Catalog # AP77729

Product Information

Application	WB
Primary Accession	O15527
Reactivity	Human
Host	Rabbit
Clonality	Monoclonal Antibody
Isotype	IgG
Conjugate	Unconjugated
Immunogen	A synthesized peptide derived from human OGG1
Purification	Affinity Chromatography
Calculated MW	38782

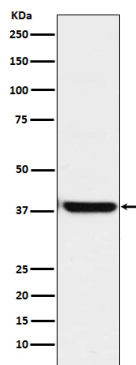
Additional Information

Gene ID	4968
Other Names	OGG1
Dilution	WB~~1/500-1/1000
Format	Liquid in 10mM PBS, pH 7.4, 150mM sodium chloride, 0.05% BSA, 0.02% sodium azide and 50% glycerol.
Storage	Store at 4°C short term. Aliquot and store at -20°C long term. Avoid freeze/thaw cycles.

Protein Information

Name	OGG1
Synonyms	MMH, MUTM, OGH1
Function	DNA repair enzyme that incises DNA at 8-oxoG residues. Excises 7,8-dihydro-8-oxoguanine and 2,6-diamino-4-hydroxy-5-N-methylformamidopyrimidine (FAPY) from damaged DNA. Has a beta-lyase activity that nicks DNA 3' to the lesion.
Cellular Location	Nucleus, nucleoplasm. Nucleus speckle. Nucleus matrix. Note=Together with APEX1 is recruited to nuclear speckles in UVA-irradiated cells [Isoform 2A]; Mitochondrion.
Tissue Location	Ubiquitous.

Images



Please note: All products are 'FOR RESEARCH USE ONLY. NOT FOR USE IN DIAGNOSTIC OR THERAPEUTIC PROCEDURES'.