

CHD3 Rabbit mAb

Catalog # AP77721

Product Information

Application	WB, IHC-P, IF, FC, ICC
Primary Accession	Q12873
Reactivity	Rat, Human, Mouse
Host	Rabbit
Clonality	Monoclonal Antibody
Isotype	IgG
Conjugate	Unconjugated
Immunogen	A synthesized peptide derived from human CHD3
Purification	Affinity Chromatography
Calculated MW	226592

Additional Information

Gene ID	1107
Other Names	CHD3
Dilution	WB~~1/500-1/1000 IHC-P~~N/A IF~~1:50~200 FC~~1:10~50 ICC~~N/A
Format	Liquid in 10mM PBS, pH 7.4, 150mM sodium chloride, 0.05% BSA, 0.02% sodium azide and 50% glycerol.
Storage	Store at 4°C short term. Aliquot and store at -20°C long term. Avoid freeze/thaw cycles.

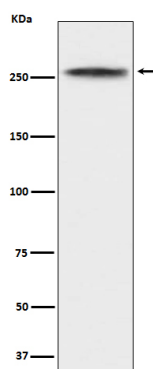
Protein Information

Name	CHD3
Function	ATP-dependent chromatin-remodeling factor that binds and distorts nucleosomal DNA (PubMed: 28977666). Acts as a component of the histone deacetylase NuRD complex which participates in the remodeling of chromatin (PubMed: 16428440 , PubMed: 28977666 , PubMed: 30397230 , PubMed: 9804427). Involved in transcriptional repression as part of the NuRD complex (PubMed: 27068747). Required for anchoring centrosomal pericentrin in both interphase and mitosis, for spindle organization and centrosome integrity (PubMed: 17626165).
Cellular Location	Nucleus, PML body. Nucleus. Cytoplasm, cytoskeleton, microtubule organizing center, centrosome Note=Associates with centrosomes in interphase and mitosis (PubMed:17626165). Localizes to sites of DNA damage (PubMed:28977666)

Tissue Location

Widely expressed.

Images



Please note: All products are 'FOR RESEARCH USE ONLY. NOT FOR USE IN DIAGNOSTIC OR THERAPEUTIC PROCEDURES'.