

alpha Fodrin Rabbit mAb

Catalog # AP77718

Product Information

Application	WB, IHC-P, IP
Primary Accession	Q13813
Reactivity	Rat, Human, Mouse
Host	Rabbit
Clonality	Monoclonal Antibody
Isotype	IgG
Conjugate	Unconjugated
Immunogen	A synthesized peptide derived from human Alpha Fodrin
Purification	Affinity Chromatography
Calculated MW	284539

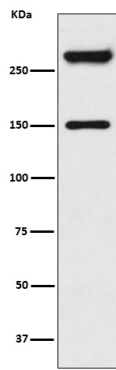
Additional Information

Gene ID	6709
Other Names	SPTAN1
Dilution	WB~~1/500-1/1000 IHC-P~~N/A IP~~N/A
Format	Liquid in 10mM PBS, pH 7.4, 150mM sodium chloride, 0.05% BSA, 0.02% sodium azide and 50% glycerol.
Storage	Store at 4°C short term. Aliquot and store at -20°C long term. Avoid freeze/thaw cycles.

Protein Information

Name	SPTAN1
Synonyms	NEAS, SPTA2
Function	Fodrin, which seems to be involved in secretion, interacts with calmodulin in a calcium-dependent manner and is thus candidate for the calcium-dependent movement of the cytoskeleton at the membrane.
Cellular Location	Cytoplasm, cytoskeleton. Cytoplasm, cell cortex. Note=Expressed along the cell membrane in podocytes and presumptive tubule cells during glomerulogenesis and is expressed along lateral cell margins in tubule cells.

Images



Please note: All products are 'FOR RESEARCH USE ONLY. NOT FOR USE IN DIAGNOSTIC OR THERAPEUTIC PROCEDURES'.