

Lymphotoxin alpha Rabbit mAb

Catalog # AP77703

Product Information

Application	WB
Primary Accession	P01374
Reactivity	Human
Host	Rabbit
Clonality	Monoclonal Antibody
Isotype	IgG
Conjugate	Unconjugated
Immunogen	A synthesized peptide derived from human TNF beta
Purification	Affinity Chromatography
Calculated MW	22297

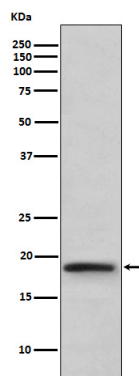
Additional Information

Gene ID	4049
Other Names	LTA
Dilution	WB~~1/500-1/1000
Format	Liquid in 10mM PBS, pH 7.4, 150mM sodium chloride, 0.05% BSA, 0.02% sodium azide and 50% glycerol.
Storage	Store at 4°C short term. Aliquot and store at -20°C long term. Avoid freeze/thaw cycles.

Protein Information

Name	LTA
Synonyms	TNFB, TNFSF1
Function	Cytokine that in its homotrimeric form binds to TNFRSF1A/TNFR1, TNFRSF1B/TNFR and TNFRSF14/HVEM (PubMed: 9462508). In its heterotrimeric form with LTB binds to TNFRSF3/LTBR (PubMed: 24248355). Lymphotoxin is produced by lymphocytes and is cytotoxic for a wide range of tumor cells in vitro and in vivo.
Cellular Location	Secreted. Membrane. Note=The homotrimer is secreted. The heterotrimer is membrane-associated

Images



Please note: All products are 'FOR RESEARCH USE ONLY. NOT FOR USE IN DIAGNOSTIC OR THERAPEUTIC PROCEDURES'.