

ATG12 Rabbit mAb

Catalog # AP77700

Product Information

Application	WB, IHC-P, IF, FC, ICC, IP
Primary Accession	O94817
Reactivity	Human
Host	Rabbit
Clonality	Monoclonal Antibody
Isotype	IgG
Conjugate	Unconjugated
Immunogen	A synthesized peptide derived from human Apg12(Atg12)
Purification	Affinity Chromatography
Calculated MW	15113

Additional Information

Gene ID	9140
Other Names	ATG12
Dilution	WB~~1/500-1/1000 IHC-P~~N/A IF~~1:50~200 FC~~1:10~50 ICC~~N/A IP~~N/A
Format	Liquid in 10mM PBS, pH 7.4, 150mM sodium chloride, 0.05% BSA, 0.02% sodium azide and 50% glycerol.
Storage	Store at 4°C short term. Aliquot and store at -20°C long term. Avoid freeze/thaw cycles.

Protein Information

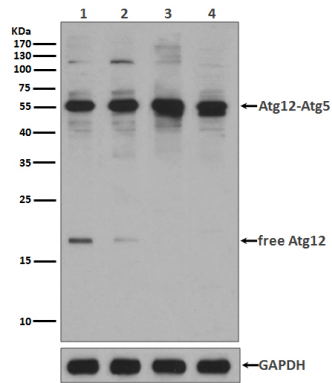
Name	ATG12 (HGNC:588)
Synonyms	APG12, APG12L
Function	Ubiquitin-like protein involved in autophagy vesicles formation. Conjugation with ATG5 through a ubiquitin-like conjugating system involving also ATG7 as an E1-like activating enzyme and ATG10 as an E2-like conjugating enzyme, is essential for its function. The ATG12-ATG5 conjugate acts as an E3-like enzyme which is required for lipidation of ATG8 family proteins and their association to the vesicle membranes. As part of the ATG8 conjugation system with ATG5 and ATG16L1, required for recruitment of LRRK2 to stressed lysosomes and induction of LRRK2 kinase activity in response to lysosomal stress (By similarity).
Cellular Location	Cytoplasm. Preautophagosomal structure membrane; Peripheral membrane

protein. Note=TECPR1 recruits the ATG12- ATG5 conjugate to the autolysosomal membrane

Tissue Location

Ubiquitous..

Images



Please note: All products are 'FOR RESEARCH USE ONLY. NOT FOR USE IN DIAGNOSTIC OR THERAPEUTIC PROCEDURES'.