

delta Sarcoglycan Rabbit mAb

Catalog # AP77695

Product Information

Application	WB, IHC-P, IP
Primary Accession	Q92629
Reactivity	Human
Host	Rabbit
Clonality	Monoclonal Antibody
Isotype	IgG
Conjugate	Unconjugated
Immunogen	A synthesized peptide derived from human delta Sarcoglycan
Purification	Affinity Chromatography
Calculated MW	32071

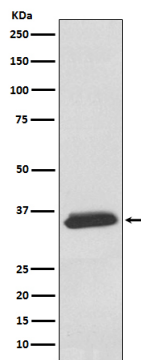
Additional Information

Gene ID	6444
Other Names	SGCD
Dilution	WB~~1/500-1/1000 IHC-P~~N/A IP~~N/A
Format	Liquid in 10mM PBS, pH 7.4, 150mM sodium chloride, 0.05% BSA, 0.02% sodium azide and 50% glycerol.
Storage	Store at 4°C short term. Aliquot and store at -20°C long term. Avoid freeze/thaw cycles.

Protein Information

Name	SGCD
Function	Component of the sarcoglycan complex, a subcomplex of the dystrophin-glycoprotein complex which forms a link between the F-actin cytoskeleton and the extracellular matrix.
Cellular Location	Cell membrane, sarcolemma; Single-pass type II membrane protein. Cytoplasm, cytoskeleton
Tissue Location	Most strongly expressed in skeletal and cardiac muscle. Also detected in smooth muscle. Weak expression in brain and lung

Images



Please note: All products are 'FOR RESEARCH USE ONLY. NOT FOR USE IN DIAGNOSTIC OR THERAPEUTIC PROCEDURES'.