

gamma Sarcoglycan Rabbit mAb

Catalog # AP77693

Product Information

Application	WB, IHC-P, IP
Primary Accession	Q13326
Reactivity	Human
Host	Rabbit
Clonality	Monoclonal Antibody
Isotype	IgG
Conjugate	Unconjugated
Immunogen	A synthesized peptide derived from human gamma Sarcoglycan
Purification	Affinity Chromatography
Calculated MW	32379

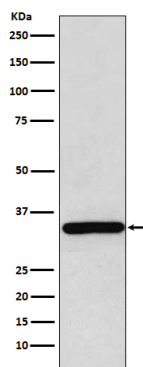
Additional Information

Gene ID	6445
Other Names	SGCG
Dilution	WB~~1/500-1/1000 IHC-P~~N/A IP~~N/A
Format	Liquid in 10mM PBS, pH 7.4, 150mM sodium chloride, 0.05% BSA, 0.02% sodium azide and 50% glycerol.
Storage	Store at 4°C short term. Aliquot and store at -20°C long term. Avoid freeze/thaw cycles.

Protein Information

Name	SGCG
Function	Component of the sarcoglycan complex, a subcomplex of the dystrophin-glycoprotein complex which forms a link between the F-actin cytoskeleton and the extracellular matrix.
Cellular Location	Cell membrane, sarcolemma; Single-pass type II membrane protein. Cytoplasm, cytoskeleton
Tissue Location	Expressed in skeletal and heart muscle.

Images



Please note: All products are 'FOR RESEARCH USE ONLY. NOT FOR USE IN DIAGNOSTIC OR THERAPEUTIC PROCEDURES'.