

CAMKK1 Antibody (N-term)

Purified Rabbit Polyclonal Antibody (Pab)

Catalog # AP7768a

Product Information

Application	WB, E
Primary Accession	Q8N5S9
Reactivity	Human
Host	Rabbit
Clonality	Polyclonal
Isotype	Rabbit IgG
Clone Names	RB16273
Calculated MW	55735
Antigen Region	86-121

Additional Information

Gene ID	84254
Other Names	Calcium/calmodulin-dependent protein kinase kinase 1, CaM-KK 1, CaM-kinase kinase 1, CaMKK 1, CaM-kinase IV kinase, Calcium/calmodulin-dependent protein kinase kinase alpha, CaM-KK alpha, CaM-kinase kinase alpha, CaMKK alpha, CAMKK1, CAMKKA
Target/Specificity	This CAMKK1 antibody is generated from rabbits immunized with a KLH conjugated synthetic peptide between 86-121 amino acids from the N-terminal region of human CAMKK1.
Dilution	WB~~1:1000 E~~Use at an assay dependent concentration.
Format	Purified polyclonal antibody supplied in PBS with 0.09% (W/V) sodium azide. This antibody is prepared by Saturated Ammonium Sulfate (SAS) precipitation followed by dialysis against PBS.
Storage	Maintain refrigerated at 2-8°C for up to 2 weeks. For long term storage store at -20°C in small aliquots to prevent freeze-thaw cycles.
Precautions	CAMKK1 Antibody (N-term) is for research use only and not for use in diagnostic or therapeutic procedures.

Protein Information

Name	CAMKK1
Synonyms	CAMKKA

Function	Calcium/calmodulin-dependent protein kinase that belongs to a proposed calcium-triggered signaling cascade involved in a number of cellular processes. Phosphorylates CAMK1, CAMK1D, CAMK1G and CAMK4. Involved in regulating cell apoptosis. Promotes cell survival by phosphorylating AKT1/PKB that inhibits pro-apoptotic BAD/Bcl2- antagonist of cell death.
Cellular Location	Cytoplasm. Nucleus.

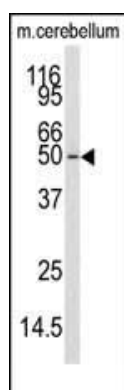
Background

CAMKK1 belongs to the Serine/Threonine protein kinase family, and to the Ca(2+)/calmodulin-dependent protein kinase subfamily. This protein plays a role in the calcium/calmodulin-dependent (CaM) kinase cascade.

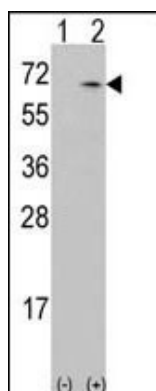
References

Guest,C.B., PLoS ONE 3 (2), E1606 (2008)
Rudd,M.F., Genome Res. 16 (6), 693-701 (2006)
Ishikawa,Y., FEBS Lett. 550 (1-3), 57-63 (2003)
Matsushita,M., J. Biol. Chem. 274 (15), 10086-10093 (1999)

Images



Western blot analysis of anti-CAMKK1 Antibody (N-term) (Cat.#AP7768a) in mouse cerebellum tissue lysates (35ug/lane). CAMKK1 (arrow) was detected using the purified Pab.



Western blot analysis of CAMKK1 (arrow) using rabbit polyclonal CAMKK1 Antibody (N-term) (Cat.#AP7768a). 293 cell lysates (2 ug/lane) either nontransfected (Lane 1) or transiently transfected with the CAMKK1 gene (Lane 2).

Citations

- [Ca2+/Calmodulin-Dependent Protein Kinases \(CaMKs\) Effects on AMP-Activated Protein Kinase \(AMPK\) Regulation of Chicken Sperm Functions.](#)

Please note: All products are 'FOR RESEARCH USE ONLY. NOT FOR USE IN DIAGNOSTIC OR THERAPEUTIC PROCEDURES'.