

CHD4 Rabbit mAb

Catalog # AP77687

Product Information

Application	WB, IF, FC, ICC
Primary Accession	Q14839
Reactivity	Human
Host	Rabbit
Clonality	Monoclonal Antibody
Isotype	IgG
Conjugate	Unconjugated
Immunogen	A synthesized peptide derived from human CHD4
Purification	Affinity Chromatography
Calculated MW	218005

Additional Information

Gene ID	1108
Other Names	CHD4
Dilution	WB~~1/500-1/1000 IF~~1:50~200 FC~~1:10~50 ICC~~N/A
Format	Liquid in 10mM PBS, pH 7.4, 150mM sodium chloride, 0.05% BSA, 0.02% sodium azide and 50% glycerol.
Storage	Store at 4°C short term. Aliquot and store at -20°C long term. Avoid freeze/thaw cycles.

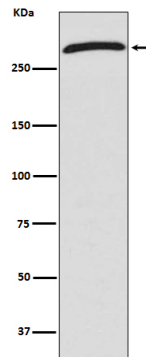
Protein Information

Name	CHD4
Function	ATP-dependent chromatin-remodeling factor that binds and distorts nucleosomal DNA (PubMed: 28977666 , PubMed: 32543371). Acts as a component of the histone deacetylase NuRD complex which participates in the remodeling of chromatin (PubMed: 16428440 , PubMed: 17626165 , PubMed: 28977666 , PubMed: 9804427). Localizes to acetylated damaged chromatin in a ZMYND8-dependent manner, to promote transcriptional repression and double-strand break repair by homologous recombination (PubMed: 25593309). Involved in neurogenesis (By similarity).
Cellular Location	Nucleus. Cytoplasm, cytoskeleton, microtubule organizing center, centrosome. Note=Associates with centrosomes in interphase (By similarity). Localizes to sites of DNA damage in a manner dependent on ZMYND8 and ZNF687 (PubMed:27732854, PubMed:28977666). {ECO:0000250 UniProtKB:Q6PDQ2, ECO:0000269 PubMed:27732854,

Tissue Location

Widely expressed..

Images



Please note: All products are 'FOR RESEARCH USE ONLY. NOT FOR USE IN DIAGNOSTIC OR THERAPEUTIC PROCEDURES'.