

# GCET1 Rabbit mAb

Catalog # AP77686

## Product Information

---

<b>Application</b>	WB
<b>Primary Accession</b>	<a href="#">Q86WD7</a>
<b>Reactivity</b>	Rat, Human, Mouse
<b>Host</b>	Rabbit
<b>Clonality</b>	Monoclonal Antibody
<b>Isotype</b>	IgG
<b>Conjugate</b>	Unconjugated
<b>Immunogen</b>	A synthesized peptide derived from human GCET1
<b>Purification</b>	Affinity Chromatography
<b>Calculated MW</b>	46557

## Additional Information

---

<b>Gene ID</b>	327657
<b>Other Names</b>	SERPINA9
<b>Dilution</b>	WB~~1/500-1/1000
<b>Format</b>	Liquid in 10mM PBS, pH 7.4, 150mM sodium chloride, 0.05% BSA, 0.02% sodium azide and 50% glycerol.
<b>Storage</b>	Store at 4°C short term. Aliquot and store at -20°C long term. Avoid freeze/thaw cycles.

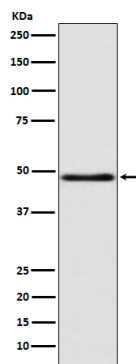
## Protein Information

---

<b>Name</b>	SERPINA9
<b>Synonyms</b>	GCET1, SERPINA11
<b>Function</b>	Protease inhibitor that inhibits trypsin and trypsin-like serine proteases (in vitro). Inhibits plasmin and thrombin with lower efficiency (in vitro).
<b>Cellular Location</b>	[Isoform 1]: Secreted. [Isoform 3]: Cytoplasm. [Isoform 5]: Cytoplasm. [Isoform 7]: Membrane; Single-pass type II membrane protein
<b>Tissue Location</b>	Highly expressed in normal germinal center (GC) B- cells and GC B-cell-derived malignancies.

## Images

---



Please note: All products are 'FOR RESEARCH USE ONLY. NOT FOR USE IN DIAGNOSTIC OR THERAPEUTIC PROCEDURES'.