

CD40L Rabbit mAb

Catalog # AP77666

Product Information

Application	WB
Primary Accession	P29965
Reactivity	Human, Mouse
Host	Rabbit
Clonality	Monoclonal Antibody
Isotype	IgG
Conjugate	Unconjugated
Immunogen	A synthesized peptide derived from human CD40L
Purification	Affinity Chromatography
Calculated MW	29274

Additional Information

Gene ID	959
Other Names	CD40LG
Dilution	WB~~1/500-1/1000
Format	Liquid in 10mM PBS, pH 7.4, 150mM sodium chloride, 0.05% BSA, 0.02% sodium azide and 50% glycerol.
Storage	Store at 4°C short term. Aliquot and store at -20°C long term. Avoid freeze/thaw cycles.

Protein Information

Name	CD40LG
Synonyms	CD40L, TNFSF5, TRAP
Function	Cytokine that acts as a ligand to CD40/TNFRSF5 (PubMed: 1280226 , PubMed: 31331973). Costimulates T-cell proliferation and cytokine production (PubMed: 8617933). Its cross-linking on T-cells generates a costimulatory signal which enhances the production of IL4 and IL10 in conjunction with the TCR/CD3 ligation and CD28 costimulation (PubMed: 8617933). Induces the activation of NF-kappa-B (PubMed: 15067037 , PubMed: 31331973). Induces the activation of kinases MAPK8 and PAK2 in T-cells (PubMed: 15067037). Induces tyrosine phosphorylation of isoform 3 of CD28 (PubMed: 15067037). Mediates B-cell proliferation in the absence of co-stimulus as well as IgE production in the presence of IL4 (By similarity). Involved in immunoglobulin class switching (By similarity).

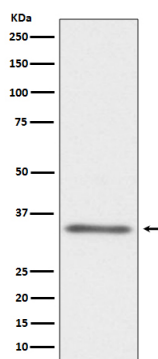
Cellular Location

Cell membrane; Single-pass type II membrane protein. Cell surface

Tissue Location

Specifically expressed on activated CD4+ T- lymphocytes

Images



Please note: All products are 'FOR RESEARCH USE ONLY. NOT FOR USE IN DIAGNOSTIC OR THERAPEUTIC PROCEDURES'.