

Rhodopsin Rabbit mAb

Catalog # AP77650

Product Information

Application	WB, IHC-P
Primary Accession	P08100
Reactivity	Rat, Human
Host	Rabbit
Clonality	Monoclonal Antibody
Isotype	IgG
Conjugate	Unconjugated
Immunogen	A synthesized peptide derived from human Rhodopsin
Purification	Affinity Chromatography
Calculated MW	38893

Additional Information

Gene ID	6010
Other Names	RHO
Dilution	WB~~1/500-1/1000 IHC-P~~N/A
Format	Liquid in 10mM PBS, pH 7.4, 150mM sodium chloride, 0.05% BSA, 0.02% sodium azide and 50% glycerol.
Storage	Store at 4°C short term. Aliquot and store at -20°C long term. Avoid freeze/thaw cycles.

Protein Information

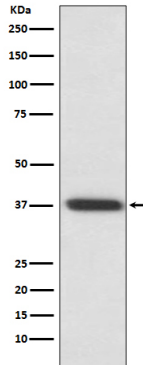
Name	RHO
Synonyms	OPN2
Function	Photoreceptor required for image-forming vision at low light intensity (PubMed: 7846071 , PubMed: 8107847). Required for photoreceptor cell viability after birth (PubMed: 12566452 , PubMed: 2215617). Light- induced isomerization of the chromophore 11-cis-retinal to all-trans- retinal triggers a conformational change that activates signaling via G-proteins (PubMed: 26200343 , PubMed: 28524165 , PubMed: 28753425 , PubMed: 8107847). Subsequent receptor phosphorylation mediates displacement of the bound G-protein alpha subunit by the arrestin SAG and terminates signaling (PubMed: 26200343 , PubMed: 28524165).
Cellular Location	Membrane; Multi-pass membrane protein. Cell projection, cilium, photoreceptor outer segment. Note=Synthesized in the inner segment (IS) of

rod photoreceptor cells before vectorial transport to disk membranes in the rod outer segment (OS) photosensory cilia

Tissue Location

Rod shaped photoreceptor cells which mediate vision in dim light

Images



Please note: All products are 'FOR RESEARCH USE ONLY. NOT FOR USE IN DIAGNOSTIC OR THERAPEUTIC PROCEDURES'.