

Dopamine Transporter Rabbit mAb

Catalog # AP77644

Product Information

Application	WB, FC, IP
Primary Accession	Q01959
Reactivity	Human
Host	Rabbit
Clonality	Monoclonal Antibody
Isotype	IgG
Conjugate	Unconjugated
Immunogen	A synthesized peptide derived from human Dopamine Transporter
Purification	Affinity Chromatography
Calculated MW	68495

Additional Information

Gene ID	6531
Other Names	SLC6A3
Dilution	WB~~1/500-1/1000 FC~~1:10~50 IP~~N/A
Format	Liquid in 10mM PBS, pH 7.4, 150mM sodium chloride, 0.05% BSA, 0.02% sodium azide and 50% glycerol.
Storage	Store at 4°C short term. Aliquot and store at -20°C long term. Avoid freeze/thaw cycles.

Protein Information

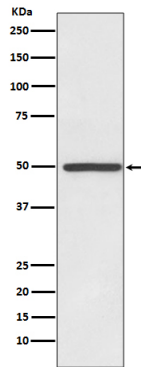
Name	SLC6A3
Synonyms	DAT1
Function	Mediates sodium- and chloride-dependent transport of dopamine (PubMed: 10375632 , PubMed: 11093780 , PubMed: 1406597 , PubMed: 15505207 , PubMed: 19478460 , PubMed: 39112701 , PubMed: 39112703 , PubMed: 39112705 , PubMed: 8302271). Also mediates sodium- and chloride-dependent transport of norepinephrine (also known as noradrenaline) (By similarity). Regulator of light-dependent retinal hyaloid vessel regression, downstream of OPN5 signaling (By similarity).
Cellular Location	Cell membrane; Multi-pass membrane protein. Cell projection, neuron projection {ECO:0000250 UniProtKB:P23977}. Cell projection, axon. Note=Localizes to neurite tips in neuronal cells (By similarity). Colocalizes with SEPTIN4 at axon terminals, especially at the varicosities (By similarity).

{ECO:0000250|UniProtKB:P23977, ECO:0000250|UniProtKB:Q61327}

Tissue Location

Highly expressed in substantia nigra (PubMed:7637582). Expressed in axonal varicosities in dopaminergic nerve terminals (at protein level) (PubMed:17296554). Expressed in the striatum (at protein level) (PubMed:17296554)

Images



Please note: All products are 'FOR RESEARCH USE ONLY. NOT FOR USE IN DIAGNOSTIC OR THERAPEUTIC PROCEDURES'.