

# Endothelin Receptor B Rabbit mAb

Catalog # AP77641

## Product Information

---

<b>Application</b>	WB, IP
<b>Primary Accession</b>	<a href="#">P24530</a>
<b>Reactivity</b>	Human
<b>Host</b>	Rabbit
<b>Clonality</b>	Monoclonal Antibody
<b>Isotype</b>	IgG
<b>Conjugate</b>	Unconjugated
<b>Immunogen</b>	A synthesized peptide derived from human Endothelin B Receptor
<b>Purification</b>	Affinity Chromatography
<b>Calculated MW</b>	49644

## Additional Information

---

<b>Gene ID</b>	1910
<b>Other Names</b>	EDNRB
<b>Dilution</b>	WB~~1/500-1/1000 IP~~N/A
<b>Format</b>	Liquid in 10mM PBS, pH 7.4, 150mM sodium chloride, 0.05% BSA, 0.02% sodium azide and 50% glycerol.
<b>Storage</b>	Store at 4°C short term. Aliquot and store at -20°C long term. Avoid freeze/thaw cycles.

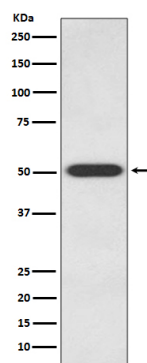
## Protein Information

---

<b>Name</b>	EDNRB ( <a href="#">HGNC:3180</a> )
<b>Synonyms</b>	ETRB
<b>Function</b>	Non-specific receptor for endothelin 1, 2, and 3. Mediates its action by association with G proteins that activate a phosphatidylinositol-calcium second messenger system.
<b>Cellular Location</b>	Cell membrane; Multi-pass membrane protein. Note=internalized after activation by endothelins.
<b>Tissue Location</b>	Expressed in placental stem villi vessels, but not in cultured placental villi smooth muscle cells

## Images

---



Please note: All products are 'FOR RESEARCH USE ONLY. NOT FOR USE IN DIAGNOSTIC OR THERAPEUTIC PROCEDURES'.