

CD59 Rabbit mAb

Catalog # AP77638

Product Information

Application	WB, IF, FC, ICC, IP
Primary Accession	P13987
Reactivity	Human
Host	Rabbit
Clonality	Monoclonal Antibody
Isotype	IgG
Conjugate	Unconjugated
Immunogen	A synthesized peptide derived from human CD59
Purification	Affinity Chromatography
Calculated MW	14177

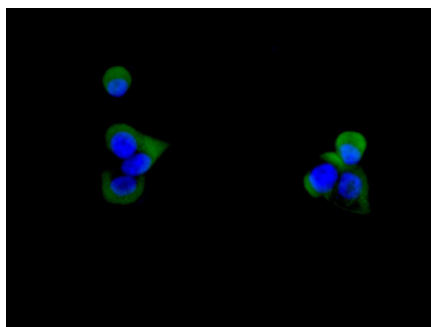
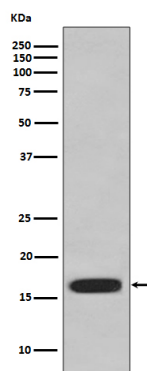
Additional Information

Gene ID	966
Other Names	CD59
Dilution	WB~~1/500-1/1000 IF~~1/50-1/200 FC~~1:10~50 ICC~~N/A IP~~N/A
Format	Liquid in 10mM PBS, pH 7.4, 150mM sodium chloride, 0.05% BSA, 0.02% sodium azide and 50% glycerol.
Storage	Store at 4°C short term. Aliquot and store at -20°C long term. Avoid freeze/thaw cycles.

Protein Information

Name	CD59 {ECO:0000303 PubMed:2475570, ECO:0000312 HGNC:HGNC:1689}
Function	Potent inhibitor of the complement membrane attack complex (MAC) action, which protects human cells from damage during complement activation (PubMed: 11882685 , PubMed: 1698710 , PubMed: 2475111 , PubMed: 2475570 , PubMed: 2606909 , PubMed: 9053451). Acts by binding to the beta-haipins of C8 (C8A and C8B) components of the assembling MAC, forming an intermolecular beta-sheet that prevents incorporation of the multiple copies of C9 required for complete formation of the osmolytic pore (PubMed: 11882685 , PubMed: 1698710 , PubMed: 36797260).
Cellular Location	Cell membrane; Lipid-anchor, GPI-anchor. Secreted. Note=Localizes to the cell surface (PubMed:36797260). Soluble form found in a number of tissues (PubMed:8670172).

Images



Please note: All products are 'FOR RESEARCH USE ONLY. NOT FOR USE IN DIAGNOSTIC OR THERAPEUTIC PROCEDURES'.